



CLASSIC PORTFOLIO

The Safari Collection: Giraffe Manor & The Retreat

KENYA

Updated: May 2024





GENERAL INFORMATION

CLASSIFICATION	PREMIER: 1 lodge & 1 retreat. Giraffe Manor annual Closure: 15 Apr – 12 May (The Retreat doesn't close). Privately owned.
LAND RELATIONSHIP	12 acres of private land serving as a sanctuary for the endangered Rothschild's/Nubian giraffe, across 140 acres of indigenous forest,
OVERVIEW	Giraffe Manor, owned by The Safari Collection, offers a unique blend of wildlife encounters and hospitality in Nairobi's Langata suburb. The manor house exudes the charm of East Africa's safari era, with elegant interiors and lush gardens reminiscent of the film "Out of Africa." Guests can enjoy the Rothschild's giraffes that wander around the house and in the garden, while the Manor's involvement in conservation efforts adds to its allure.
IMPACT OF YOUR STAY	LOW MEDIUM HIGH VERY HIGH By staying at Giraffe Manor, guests directly contribute to the conservation of endangered giraffes with US\$ 10 donated to the African Fund for Endangered Wildlife (AFEW) for every stay, supporting the conservation and breeding efforts of Rothschild's/Nubian giraffes. The Safari Collection is dedicated to preserving East Africa's natural wonders and communities, exemplified by their creation of the Footprint Trust that is aimed at environmental protection and positive community impact.
ACCESS	Jomo Kenyatta International Airport (NBO): 60-minute road transfer (traffic dependent). Wilson Airport (WIL) - 20-30 min complimentary transfer (traffic dependent).
LODGES & VILLAS	Giraffe Manor: 10 rooms & 2 family suites. Per person rate. Base rate family suite. The Retreat: 4 rooms. Base rate per room.
CHILDREN	All ages. Baby listening services are available by prior arrangement.
HEALTH	Low risk malaria area – seek advice from your health professional. Full medical support available. Proof of yellow fever vaccination is required upon arrival in Kenya.

WEATHER

Like the rest of Kenya, Nairobi experiences warm and wet summers, paired with cold and dry winters. There isn't huge variation in temperatures throughout the year, but layers are recommended to manage the cold mornings and evenings, with warm comfortable days.

JANUARY – MARCH

13 - 27 °C | 55 - 81 °F

The dry spell between the long and short rains, with pleasant daytime temperatures.

APRIL – JUNE

14 - 25 °C | 57 - 77 °F

April sees the most rainfall of the year, but by June the skies clear and days are comfortable and dry.

JULY – SEPTEMBER

12 - 26 °C | 55 - 79 °F

The mornings and evenings can be chilly, but the days are filled with blue skies and warm sunshine.

OCTOBER – DECEMBER

13 - 25 °C | 55 - 77 °F

The short rains begin. November has the most precipitation, mostly in the afternoon in the form of thunderstorms.

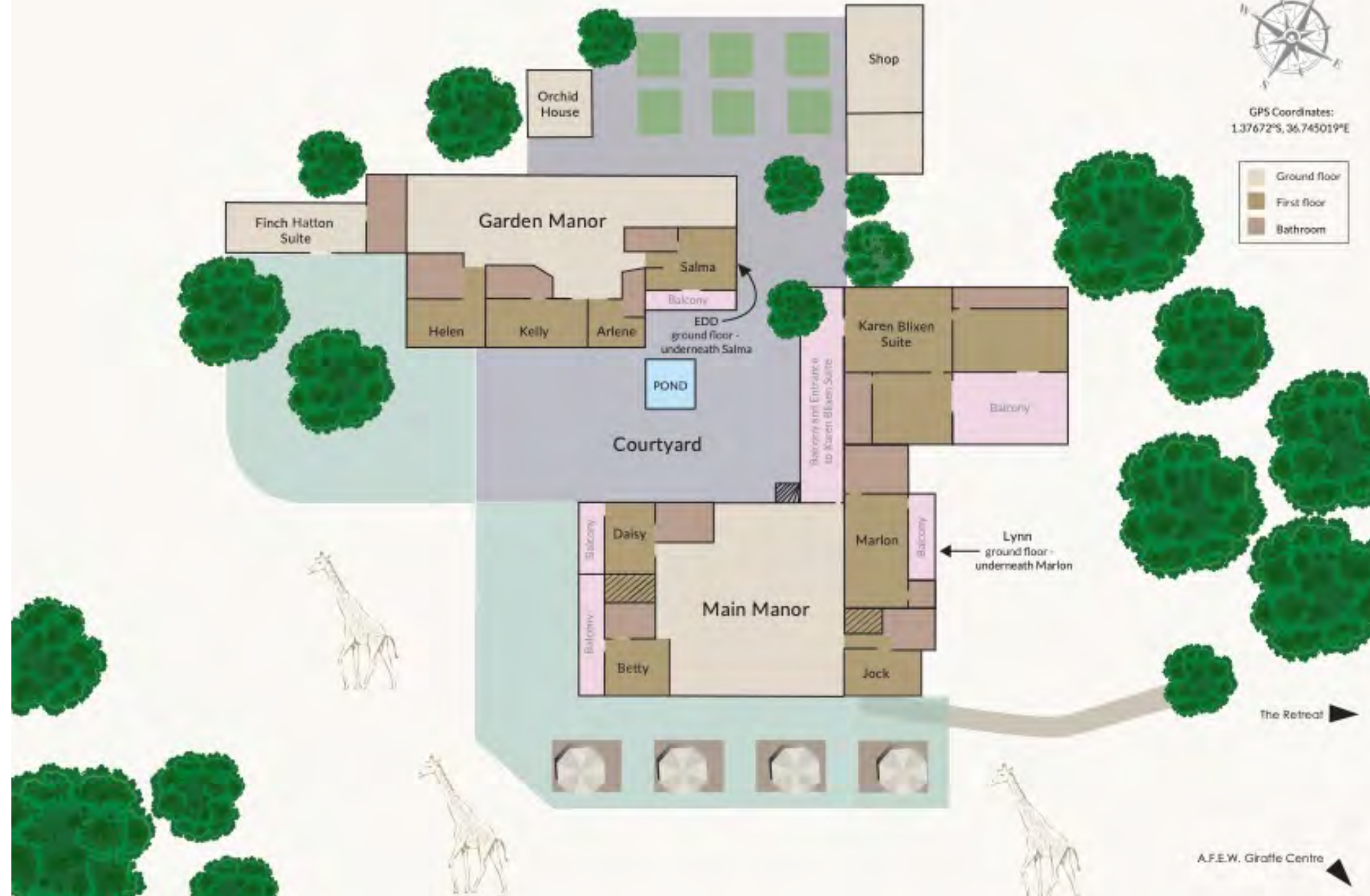
NEED TO KNOW

ELECTRICITY	240V Mains
WIFI & MOBILE SIGNAL	WiFi and mobile signal in main area & rooms.
CREDIT CARDS	Yes.
SECURITY	Fenced, 24-hr security.
MAKE AN IMPACT	Donate to the Giraffe Conservation Foundation by sponsoring a giraffe.
GYM / KEEP FIT	Fully-equipped gym at The Retreat, and yoga mats available in the rooms.
SPA	Full-service wellness centre at The Retreat.
FOOD & WINE	Fully inclusive: all meals, & drinks. Yes Halaal / No Kosher.
OTHER FACILITIES	Swimming pool, Daisy's Cafe.
ACTIVITIES	Breakfast with giraffes, afternoon tea, visit the Giraffe Centre.



GPS Coordinates:
1.37672°S, 36.745019°E

	Ground floor
	First floor
	Bathroom



A.F.E.W. Graftle Centre

GIRAFFE MANOR

ROOMS – CHILDREN ALL AGES

# ROOMS	12 (2 family suites) Max 28 adults, 2 children	POOL	✓ At The Retreat
EXTRA BEDS	✓ (see room descriptions)	IN-ROOM WIFI	✓
TWIN BEDS	✓ (see room descriptions)	MINI BAR	✓ Waiter service
BATHROOM	En-suite	AIR CON	✗
SHOWER	✓ Indoor	FAN	✓ (standing)
BATH	✓ Excl. Daisy's and Marlon's room	MOZZIE NET	✓
HAIRDRYER	✓	LAUNDRY	✓ Included
ROOM SAFE	✓	DISABLED	✓ 2 suites

GIRAFFE MANOR – GARDEN MANOR ROOMS & SUITE DESCRIPTION:

The Garden Manor is only available in combination with a 2-night stay at any of The Safari Collection's other properties in the same itinerary. However, if the booking is made within 4 weeks of arrival, the Garden Manor may be booked on its own. From 2025, this policy will be applicable to the Historic Manor.

	EDD - A ground floor room with a super king-size bed, plus a sofa that can pull out into a bed for a child if needed. The en-suite bathroom has a corner bathtub, a large double shower and twin sinks. Although the giraffes do not have access to Edd's room, guests can enjoy the outdoor veranda area furnished with a private bar upon request.
	KELLY - Located upstairs with three single beds, two of which can be put together to accommodate a couple, the room has a views towards the south over the sanctuary forest, and an indoor fireplace. The en-suite facilities consist of a bathtub, shower and twin sinks. Guests can feed giraffes from the window in the early morning hours before breakfast.
SUPERIOR ROOMS X 5	ARLENE - Located on the upper floor, the room has a king-sized four-poster bed and is ideal for couples. The quirkily-shaped bathroom has a bathtub, shower and vintage toilet. The Rothschild's herd does not have access to Arlene, but the room offers wonderful views of the giraffes when they lope across the manor lawns to pay their daily breakfast visit.
	SALMA - Located on top floor, the room can be either a double or a twin and has a sofa which converts to a bed for a child. The en-suite facilities consist of a bathtub, shower and single sink. It has a private balcony with chairs and table, but the giraffes do not have access to the room. A steep stairway makes it not ideal for guests with mobility issues.
	HELEN - One of the most spacious rooms and often visited by the giraffes. It has two four-poster beds which can be put together to make a king bed, and can accommodate a baby cot. En-suite facilities include twin sinks, a bathtub and shower.
FINCH HATTON SUITE	This ground floor room of 74m ² has a king-sized bed as well as two single beds in a loft area accessed by a small spiral staircase. There is also a small sofa bed which can accommodate a third child if needed. The en-suite facilities have a large double-headed shower, twin sinks and a bathtub. There is also a small seating area with a fireplace.

GIRAFFE MANOR – HISTORIC MANOR ROOMS & SUITE DESCRIPTION:

BETTY - King-sized bed, fireplace and adjoining balcony from which the giraffes can be fed. The en-suite bathroom remains to this day in its original, quirky Art Deco style with a bathtub and shower.

DAISY - The room can accommodate either a couple or two singles (double or twin), with en-suite facilities of twin sinks and a spacious shower. Giraffes can be fed directly from the balcony.

JOCK - Can accommodate either a couple or two singles (double or twin). It has a fireplace for cosy Nairobi nights and both a bathtub and shower, as well as twin sinks, in the adjoining en-suite. Giraffes can be fed directly from this room.

SUPERIOR ROOMS X 5

MARLON - Twin beds that can be converted into a large double bed, plus an adjoining sitting room with a sofa that can convert into a bed for a child. The master bathroom has a shower and there is another compact shower and toilet at the opposite end of the room, ideal for an accompanying child. Guests can feed the giraffes as they pass by.

LYNN - Located on the ground floor with an en-suite bathroom including bathtub, shower and twin sinks. The bed can be a double or converted to two singles, and the room can be accessed from the ground level for guests who may have mobility issues. There is a small veranda with access to a larger, covered outdoor seating area where guests can enjoy feeding the giraffes ambling past.

KAREN BLIXEN SUITE

Covering 113m² on the top floor, this two-bedroomed suite has en-suite facilities, each with a bathtub, shower and twin sinks. The master bedroom has a king-sized four poster bed, whilst the second bedroom has two single four poster beds and a small daybed for a young child. Giraffes can be fed from the south-facing balcony in the early morning. There is also a lounge with fireplace and writing desk.

THE RETREAT

ROOMS – CHILDREN ALL AGES

# ROOMS	4 - day use only Max 17 guests	POOL	✓
EXTRA BEDS	✓ All	IN-ROOM WIFI	✓
TWIN BEDS	✓ All	MINI BAR	✓ Waiter service
BATHROOM	En-suite	AIR CON	✗
SHOWER	✓ Indoor	FAN	✓ (standing)
BATH	✓ (Lily and Alizeti only)	MOZZIE NET	✓
HAIRDRYER	✓	LAUNDRY	✓ (included)
ROOM SAFE	✓	DISABLED	✗

THE RETREAT - ROOM DESCRIPTION:

LARGE DAY ROOM X 1

Lily

Lily, the largest day room, offers beautiful views of The Retreat's front lawn and the giraffe sanctuary. It features a bright lounge area with comfy sofas and a private balcony alongside a sleeping area with desk space and a choice of twin or king-sized beds. On the opposite side of the room, there's a daybed space, a separate toilet, and an ensuite bathroom with twin sinks, a full-sized bathtub, and a walk-in rain shower.

Maximum capacity: 6 guests

MEDIUM DAY ROOM X 2

Waridi & Nandi

Waridi offers captivating views of the giraffe sanctuary and Historic Manor with a private balcony to observe giraffes in the distance. This bright space includes twin or king-sized bed options and an additional day bed for flexibility. Its open-plan layout features twin sinks, a spacious walk-in rain shower, and a separate toilet. Nandi is tucked away in a corner of The Retreat, overlooking the swimming pool and AFEW Giraffe Centre. With a shaded balcony and flexible bed options, it is a serene space, ideal for relaxation. The open-plan design includes twin sinks, a sunlit walk-in rain shower, and a separate toilet.

Maximum capacity: 4 guests

SMALL DAY ROOM X 1

Alizeti

Alizeti, positioned at the rear of The Retreat, offers a bright atmosphere with a spacious window overlooking the organic vegetable garden. This characterful room provides a relaxation space, a choice of king-sized or twin beds, a separate ensuite with a full-sized bathtub and walk-in rain shower, and a convenient writing desk with views of nature and a stunning coral brick feature wall.

Maximum capacity: 3 guests

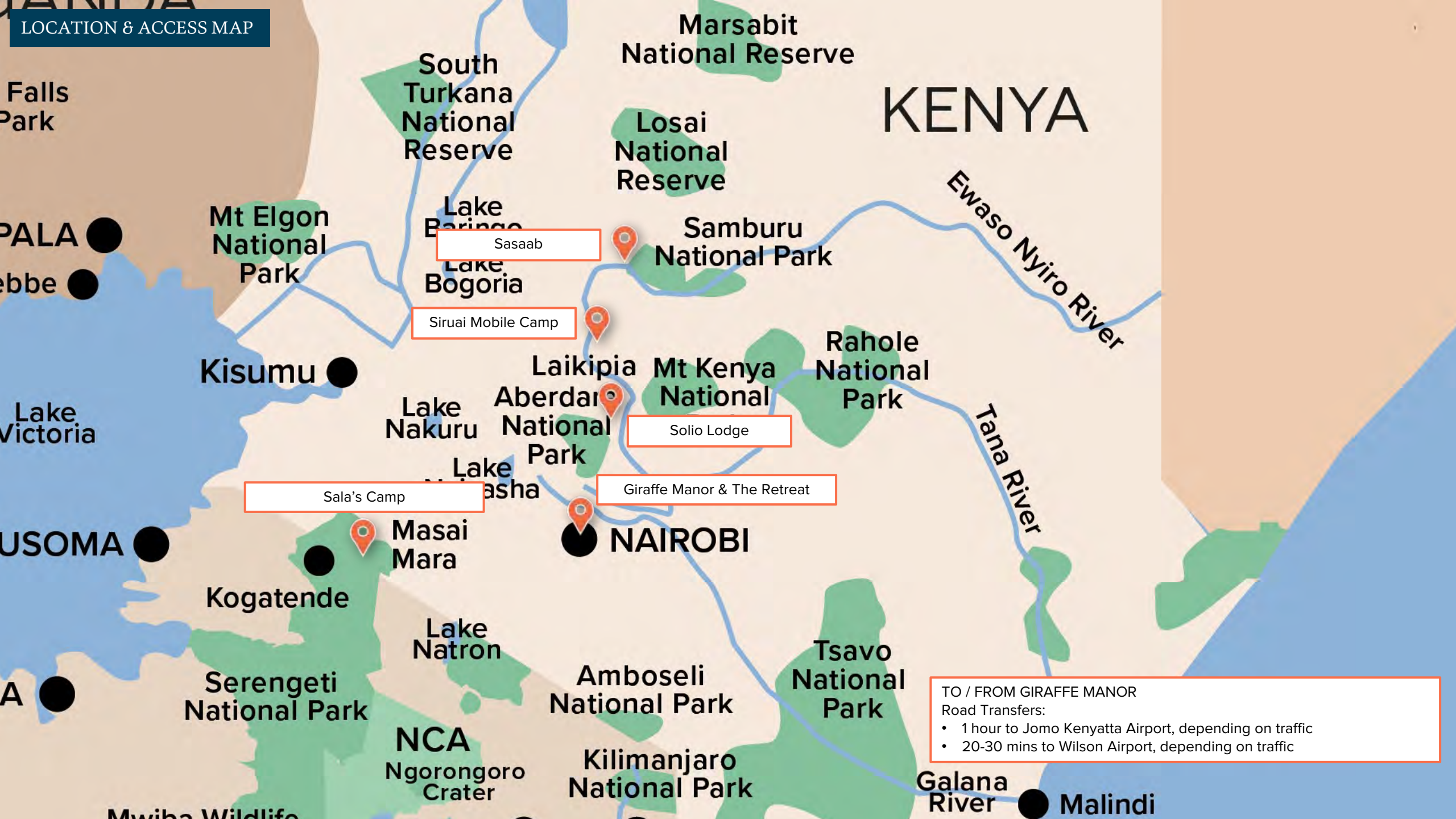




ACTIVITIES & EXPERIENCES

BREAKFAST WITH GIRAFFES	Giraffe Manor guests only. Daily 06:00 – 09:00.
VISIT GIRAFFE CENTRE	Feed giraffes, learn about the AEFW conservation projects.
AFTERNOON TEA WITH GIRAFFES	Giraffe Manor guests only. Daily 17:00 – 18:00.
MANOR GAMES	Croquet, boules Jenga, or chess.
SHOPPING IN NAIROBI	Locally crafted goodies: beaded leather belts and sandals, carved wooden bowls, jewellery, traditional masks, woven baskets, Maasai blankets, and more.
ART GALLERIES	Matbronze, Circle Art Gallery, and GoDown Arts Centre. Local art is also featured at The Retreat <i>Additional costs may apply.</i>
DAY TRIP TO NAIROBI NATIONAL PARK	Private outing for up to 6 guests. <i>Book in advance, extra cost.</i>
HORSERIDING	Operated by 3 rd party supplier, Malo Stables. <i>Book in advance, extra cost.</i>
THE RETREAT	Day-use rooms only. Giraffe Manor guests can use facilities at The Retreat, but Retreat guests cannot visit Giraffe Manor.





TO / FROM GIRAFFE MANOR
Road Transfers:
• 1 hour to Jomo Kenyatta Airport, depending on traffic
• 20-30 mins to Wilson Airport, depending on traffic



GARDEN MANOR



PATIO



BREAKFAST SPREAD



ROOM INTERIOR



TEA TIME



HISTORIC MANOR



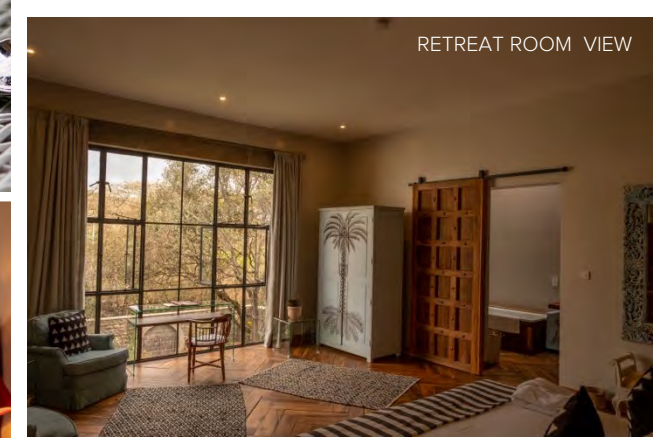
DAISY'S CAFE



DINING



RETREAT ROOM INTERIOR



RETREAT ROOM VIEW



WELLNESS FACILITIES



RETREAT LOUNGE



GYM

THE SAFARI COLLECTION	GIRAFFE MANOR & THE RETREAT
CLASSICS CLASSIFICATION	PREMIER
IMPACT OF EACH GUEST STAY	HIGH
CHILDREN (MINIMUM AGE)	ALL
FAMILY ROOMS	✓
EXCLUSIVE CAMP / VILLAS	X
HONEYMOON OFFER	X
LAND SAFARI	X
WATER SAFARI	X
SPECIAL ACTIVITIES	BREAKFAST WITH THE GIRAFFES
GET INVOLVED – CONSERVATION	✓
GET INVOLVED – COMMUNITIES	X
EXPEDITION TRIPS	X
WELLNESS & MASSAGE	✓

CLASSIC CLASSIFICATIONS:

P – Premier: These camps/lodges feature luxurious amenities and are priced at a higher tier.

C – Classic: These camps/lodges offer a more down-to-earth experience and are priced at a mid-level rate.

E – Expedition: These experiences are best suited for small groups or trips led by private guides.

IMPACT OF EACH GUEST STAY:

L – Low

M – Medium

H – High

VH – Very High

Based on the following 4 considerations we look at the positive impact that each guest is making by staying here:

- Transferability: What percentage of the daily rates is allocated to conservation and community initiatives?
- Removability: What impact would arise if the property were absent? Are there alternative lodges in the vicinity that continue to make positive contributions?
- Responsibility: To what extent does the property handle management privately, and how much is overseen as a concession under a collaborative arrangement?
- Fragility: How vulnerable is the surrounding environment and community?

WWW.THESAFARICOLLECTION.COM

reservations@thesafaricollection.com

WWW.CLASSIC-PORTFOLIO.COM

The Classics website has more detailed information, images, live availability and rates, together with our comprehensive Crib Sheet.

BOOKINGS: stitch@classic-portfolio.com

SUPPORT: info@classic-portfolio.com

CLASSIC PORTFOLIO