

Legendary Expeditions

TANZANIA



Unscripted adventures in almost 700 000 acres of protected wilderness

Journey between a luxury lodge, two tented camps, a migrational camp, and an urban retreat with a private guide for your safari, your way.

www.legendaryexpeditions.co.tz

CONNECT TO YOUR WILD WITHIN

Leave behind your expectations, pack only your sense of adventure. Escape to some of the last truly wild places on the planet for a safari experience of sophisticated luxury without the confines of a schedule.

With 5 lodges and camps in 7 iconic locations, your journey starts in Arusha and then heads to the celebrated Northern Circuit of Tanzania, following the path of the last Great Migration on earth. This is your safari, at your pace, as each booking is allocated a private vehicle and guide.

Legendary Expeditions, a Friedkin Tanzanian Company, has a deep commitment to making a positive impact through eco-tourism. The Friedkin Conservation Fund (FCF) was established for the purpose of conserving almost 700 000 acres of Tanzania's protected area; including its wildlife, wilderness and the local stakeholders of these natural resources.

LOCATION

Northern Circuit, Tanzania

ACCESS

Fly:
International flights into Kilimanjaro International Airport.

Internal scheduled charter flights connect camps.

Drive:
Road transfers are possible on shorter routes.



What we love

OFF THE BEATEN PATH

Unscripted adventures in almost 700 000 acres of protected wilderness. Here, you are discovering truly wild areas, away from the crowds.

WILDLIFE & CULTURE

A rich tapestry of experiences from sighting big cats and watching wildebeest herds to foraging with the Hadzabe, dancing with the Datoga, and flying high on helicopter excursions.

YOUR SAFARI, YOUR PACE

Each booking is allocated a guide and safari vehicle ensuring absolute privacy and total freedom to follow wherever nature leads.

VAST CONSERVATION

A safari and conservation company committed to the preservation of habitat, wildlife and communities in Tanzania's wild places.



Legendary Expeditions

TANZANIA

SEASON

Legendary Lodge, Mwiba Lodge, Mila Tented Camp, and Songa Tented Camp are open year round*. Nyasi Migrational Camp – see schedule.

WEATHER

Warm and temperate climate year-round. Winter mornings and evenings can be cool.

RAINFALL

The short rains fall from mid-November to early December, and the long rains from April to May.

TRAVEL VISA

Visas are required for most countries. We strongly recommend online visa applications prior to travelling: <https://eservices.immigration.go.tz/visa/guidelines>. Visas can be obtained on arrival but can take an excess of 2 hours.

Travel Information

CAMP MIGRATIONS	Southern Serengeti	Northern Serengeti
Nyasi Migrational Camp	15 Dec '23 – 31 Mar '24	1 Jul '23 – 15 Oct '23 1 Jun '24 – 5 Jan '25
Songa Tented Camp	1 Jun '23 – 10 Jan '24 15 Dec '24 – 5 Jan '25	15 Jun '24 – 7 Oct '24

*From 15 Dec '24 Nyasi Mobile Camp will be permanently located in the North and Songa Tented Camp in the South.

HEALTH

CURRENCY

Malaria area – seek medical advice	US Dollar (USD), British Pound (GBP), Euro, Swiss Franc (CHF), & Tanzanian Shillings (TZS)
A yellow fever certificate is not required (however check if travelling via other countries where it might be required).	

GPS COORDINATES	Legendary Lodge	Mwiba Lodge	Mila Tented Camp
Latitude	3.202680 S	3.265132 S	2.104420 S
Longitude	36.382515 E	34.515947 E	34.244730 E
	Nyasi Migrational Camp South	Nyasi Migrational Camp North (Lamai)	Songa Tented Camp
Latitude	3.170867 S	1.333784 S	1.410564 S
Longitude	34.513085 E	34.501398 E	34.552095 E



TEMPERATURE		Jan - Mar	Apr - Jun	Jul - Sep	Oct – Dec
SERENGETI (ALL OTHER LEGENDARY CAMPS)	Average day	28°C 82°F	25°C 77°F	26°C 79°F	27°C 81°F
	Average night	15°C 59°F	15°C 59°F	14°C 57°F	15°C 59°F
LEGENDARY LODGE	Average day	28°C 82°F	24°C 75°F	25°C 77°F	27°C 81°F
	Average night	17°C 62°F	16°C 61°F	14°C 57°F	17°C 62°F

*FULL DAY DRIVES: one day trip to Ndutu or the Southern Serengeti is available per 3-night stay (excluding Dec – May).

*FLY CAMPING: available from June – November. 4 tents available, perfect for a group or maximum 8 guests. Extra charge applicable.



Legendary Expeditions

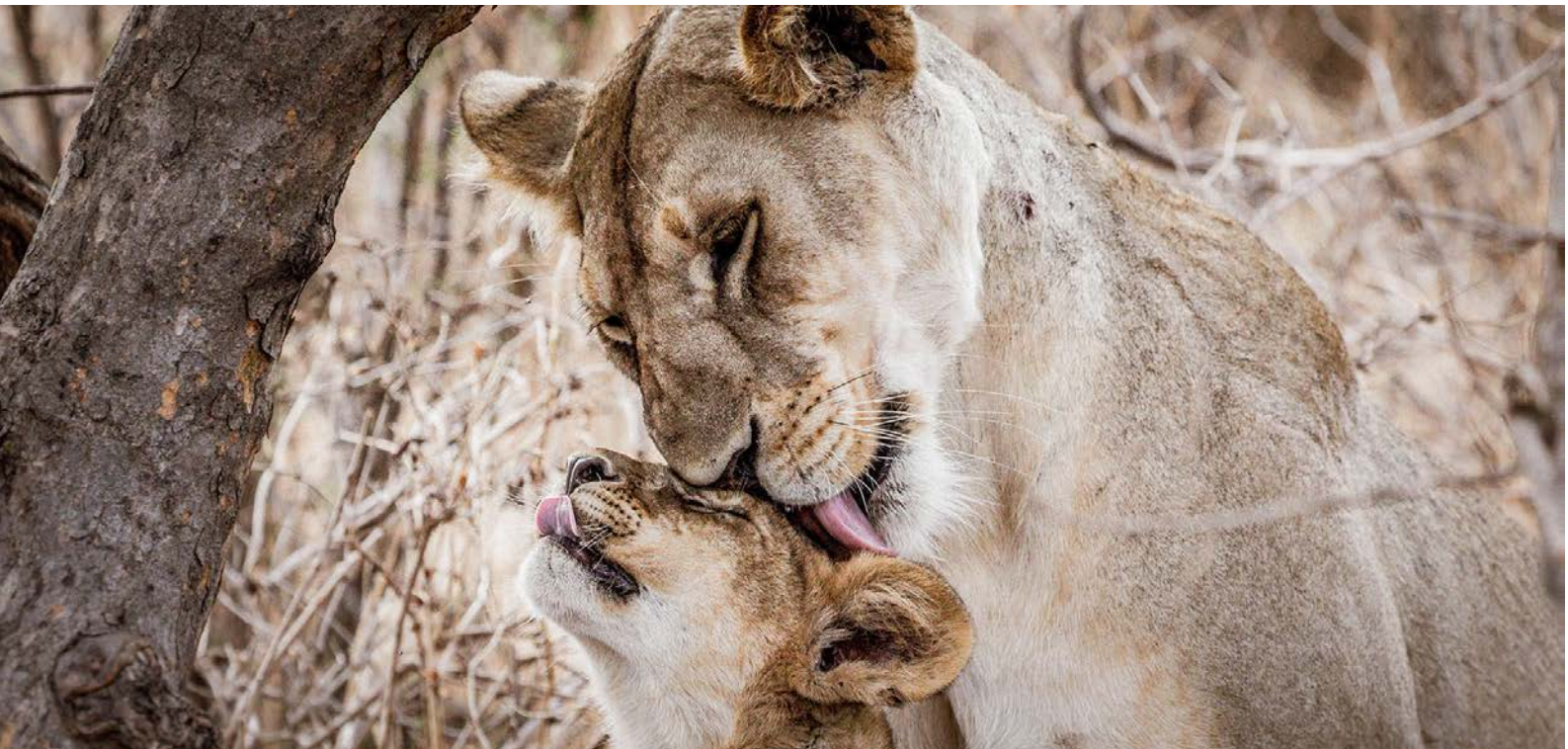
TANZANIA

The Impact of Your Stay

This is not about the camps alone, but equally the journey between. With Legendary Expeditions you explore remote and unspoilt regions with your private guide. From 4x4 drives and safari walks to hunting with the Hadzabe, dancing with the Datoga and following the migration, your expedition is underpinned by a philanthropic vision and the **Friedkin Conservation Fund Tanzania (FCFT)**. FCF is actively involved in supporting conservation and community development by working closely with the Wildlife Division of Tanzania and supporting anti-poaching operations, innovative community projects, and various research programs.

Every stay contributes through:

- Staying at **Mwiba Lodge** and paying US\$ 160 (2023) & US\$ 180 (2024) Mwiba Conservation Fee per person daily (US\$ 135 (2023) & US\$ 155 (2024) per child 4 - 15 years per night).
- This fee contributes directly to conservation, habitat protection and anti-poaching management of the Mwiba Reserve.
- Staying here also directly contributes to the communities and local tribes who are stakeholders in the eco-tourism success of the reserve.
- Interacting with the Datoga and Hadzabe tribes makes a positive contribution and empowers the women through the Datoga selling bracelets and crafts, and the Hadzabe women to gather honey, roots and bulbs.
- Staying at **Mila Tented Camp, Nyasi Migrational Camp or Songa Tented Camp** and paying between US\$ 142 and US\$ 154 Serengeti National Park Fees.
- These fees are essential for the park management of the 3,6 million acre Serengeti National Park.
- A significant portion of all bednight revenue is reinvested back into the local indigenous cultures, communities, government and wildlife conservation efforts.



Legendary Expeditions

TANZANIA

Facilities	<i>Legendary Lodge</i>	<i>Mwiba Lodge</i>	<i>Mila Tented Camp</i>	<i>Nyasi Migrational Camp</i>	<i>Songa Tented Camp</i>
MAXIMUM GUESTS	30 adults 4 children	20	14	20*	20*
CHILDREN	✓	✓	✓	✓	✓
CHILDMINDING	✓ (prior arrangement)	–	–	–	–
FENCED / SECURITY	Fenced / 24-hour security	Unfenced / 24-hour security	Unfenced / 24-hour patrol	Unfenced / 24-hour patrol	Unfenced / 24-hour patrol
ELECTRICITY	220 V	220 V	220 V (solar)	220 V	220 V
CHECK IN	14:00	14:00	14:00	14:00	14:00
CHECK OUT	10:00	10:00	10:00	11:00	11:00
WI-FI AVAILABLE	Throughout the property	Main area and rooms	Throughout the camp	Throughout the camp	Throughout the camp
MOBILE PHONE RECEPTION	✓	–	–	–	–
CREDIT CARDS	✓	✓	✓	–	–
SWIMMING POOL	✓	✓	–	–	–
HEATED JACUZZI	–	✓	–	–	–
SAFARI SHOP	✓	✓	–	–	–
KEEP FIT	✓	✓	–	–	–
SPA FACILITIES	✓	✓	–	–	–

* Nyasi Migrational Camp and Songa Tented Camp – each can accommodate up to 20 guests in 9 rooms

Legendary Expeditions

TANZANIA

Tents & Suites	<i>Legendary Lodge</i>	<i>Mwiba Lodge</i>	<i>Mila Tented Camp</i>	<i>Nyasi Migrational Camp</i>	<i>Songa Tented Camp</i>
NUMBER OF ROOMS	12	10	6	9	9
EXTRA BEDS	✓	✓	✓	✓	✓
IN-ROOM WIFI	✓	✓	✓	✓	✓
AIR CONDITIONER	✓	✓	–	–	–
FAN	On request	✓	✓	✓	✓
IN-ROOM SAFE	✓	✓	(main safe)	(main safe)	(main safe)
POOL	–	–	–	–	–
INDOOR SHOWER	✓	✓	✓*	✓*	✓*
OUTDOOR SHOWER	–	✓	–	–	–
BATH	✓	✓	–	–	–
SEPARATE W/C	✓	✓	–	–	–
MOSQUITO NETS	✓	✓	✓	✓	✓
MINI BAR	✓	✓	–	–	–
CAMP COMMUNICATION	✓	✓	✓ (radio)	✓ (radio)	✓ (radio)
HAIRDRYER	✓	✓	–	✓ (upon request)	✓ (upon request)
LAUNDRY INCLUDED	✓	✓	✓	✓	✓
DISABLED ACCESS	Please enquire	–	–	–	–

*Mila Tented Camp | Songa Tented Camp | Nyasi Migrational Camp – All have fully plumbed showers and flushing toilets.

Legendary Expeditions

TANZANIA

Set in the outskirts of Arusha on a working coffee farm, Legendary Lodge is perfect for starting or ending a trip. The 10 one-bedroom cottages and 2 two-bedroom cottages each have private verandahs and stunning views of Mount Meru. Each en-suite cottage has a fireplace, satellite television, direct dial phone, broadband connection, and complimentary mini-bar.	<i>Legendary Lodge</i>
This luxurious lodge is set amongst massive stone boulders, ancient coral trees and acacias, overlooking a rocky gorge on the Arugusinyai River. Emulating the grace of the river, the 10 suites give way to a wide-open layout where each room flows to another. The indoor shower leads to the outdoor shower, and the bath offers uninterrupted views of the wilderness beyond.	<i>Mwiba Lodge</i>
Mila Tented's prime location in the Nyasirori, in close proximity to the Grumeti riverine forest is home to some of the largest crocodiles, and biggest lion prides. The 5 tented rooms, two-bedroom family tent and main areas draw inspiration from the Hadzabe, known for their honey, which is reflected in the linens, textiles, and colours that blend into the surrounding environment.	<i>Mila Tented Camp</i>
Following the herds, Nyasi Migrational Camp operates as a seasonal camp across 2 locations within the Serengeti. Consisting of 8 en-suite tents and a family tent, the camp is designed to split into one camp of 6 and a private camp of 2 tents plus the family suite, both containing their own lounge and dining facility.	<i>Nyasi Migrational Camp</i>
Songa is taking up permanent residence in the Kogatende area of the northern Serengeti, and will become known as "Songa Tented Camp". Songa Tented Camp will retain its look and feel with 8 en-suite tents and a family tent (2 en-suite rooms and a shared lounge). The camp can be still be split, offering 6 tents on one side of the camp and 2 tents with the family tent on the other side.	<i>Songa Tented Camp</i>

Experiences	<i>Legendary Lodge</i>	<i>Mwiba Lodge</i>	<i>Mila Tented Camp</i>	<i>Nyasi Migrational Camp</i>	<i>Songa Tented Camp</i>
PRIVATE VEHICLE	Extra charge	Included	Included	Included	Included
CHILDREN ON SAFARI	✓	✓	✓	✓	✓
MORNING GAME DRIVES	–	✓	✓	✓	✓
AFTERNOON GAME DRIVES	–	✓	✓	✓	✓
FULL DAY DRIVES	–	✓*	✓	✓	✓
HOT AIR BALLOON	–	–	✓ (extra charge)	✓ (north only; extra charge)	✓ (extra charge)
CULTURAL EXPERIENCE	–	✓	–	✓ (south only)	–
WALKING SAFARIS	–	✓	–	✓ (south only)	–
BUSH DINING	–	✓	✓	✓	✓
FLY CAMPING	–	✓** (extra charge)	–	–	–
HELICOPTER EXCURSIONS	–	✓ (extra charge)	–	–	–
CYCLING/RUNNING TRAILS	✓	–	–	–	–
TRIPS TO NATIONAL PARKS	✓ (extra charge)	–	–	–	–
COFFEE TOURS	✓ (extra charge)	–	–	–	–
SHOPPING EXCURSIONS	✓ (extra charge)	–	–	–	–