



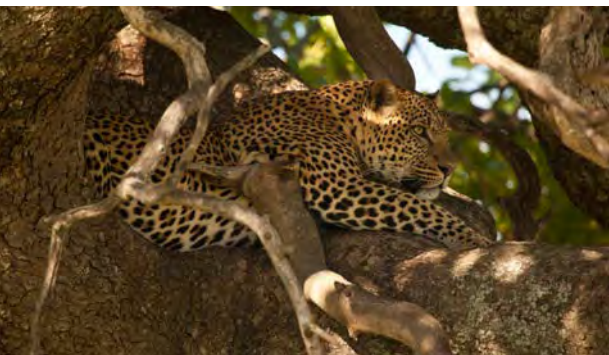
CLASSIC PORTFOLIO

The Safari Collection: Solio Lodge

KENYA

Updated: May 2024





GENERAL INFORMATION

CLASSIFICATION	PREMIER: 1 lodge. Annual Closure: 1 – 15 Nov. Privately owned.
LAND RELATIONSHIP	The only guest accommodation on 19,000 acres of conservancy surrounded by the 45,000-acre Solio Game Reserve. The conservancy is privately managed by Solio Ranch.
OVERVIEW	Solio is famed in Kenya for its unique and mind-blowing rhino viewing experiences. Tucked in the valley between the lofty slopes of Mount Kenya and the peaks of the Aberdare Mountains, it is internationally recognised as one of the most successful private rhino breeding sanctuaries in East Africa. Visitors will find that sightings of up to 40 rhinos at a time are not uncommon. In addition, guests will encounter a wide variety and abundance of game.
IMPACT OF YOUR STAY	LOW MEDIUM HIGH VERY HIGH The Safari Collection prioritizes responsible tourism, aiming to minimize environmental impact while sharing East Africa's natural wonders. Through the Footprint Trust, they support conservation and community initiatives. By staying at Solio Lodge, your conservation fees support the running of Solio Conservancy and its rhino breeding programme, therefore directly helping to protect this highly vulnerable species. In addition, Solio Lodge is involved in various community projects in the surrounding area, from annual dental and eye-clinics, to initiatives in the local primary schools.
ACCESS	Wilson Airport (WIL) - Daily scheduled charters to Nanyuki Airstrip, plus 1,5-hour game drive to camp. Private charter to Solio's airstrip, plus 15 min drive to the lodge.
LODGES & VILLAS	4 double cottages. Per person rate. 1 family cottage. Base cottage rate.
CHILDREN	All ages are welcome. "Baby listening" services are available with prior arrangement.
HEALTH	Low risk malaria area – seek advice from your healthcare professional. Full medical support available. Proof of yellow fever vaccination is required upon arrival in Kenya.

WEATHER

Solio's location at higher altitude between Mount Kenya and the slopes of Aberdare National Park results in slightly colder temperatures, though days can still be warm and comfortable. There is little fluctuation throughout the year outside of the short rains in November and long rains in April and May.

JANUARY – MARCH

7 - 26 °C | 45 - 79 °F

Stunning weather with little chance of rain. Newborn animals can be seen across the varying landscapes, and the birding opportunities are at their highest.

APRIL – JUNE

10 - 24 °C | 50 - 75 °F

April and May bring the heavier rains, but the result is lush landscapes and clean fresh air with stunning views of Mount Kenya.

JULY – SEPTEMBER

9 - 23 °C | 48 - 73 °F

Chilly mornings and evenings but lovely warm days. High season for game viewing in this dry season. Also, a great time to explore via helicopter.

OCTOBER – DECEMBER

8 - 24 °C | 46 - 75 °F

November brings short rains, but after those clear, the birds begin to arrive, and the temperatures become perfect for all day adventuring.

NEED TO KNOW

ELECTRICITY	220V mains
WI-FI & MOBILE SIGNAL	Wi-Fi in rooms. Limited mobile reception.
CREDIT CARDS	Yes.
SECURITY	Unfenced, 24-hr security.
MAKE AN IMPACT	A stay at Solio Lodge contributes to the rhino breeding project and community initiatives.
GYM / KEEP FIT	Gym in a bag.
SPA	Yes – in-room treatments.
FOOD & WINE	Fully inclusive: all meals & drinks. Yes Halaal / No Kosher.
OTHER FACILITIES	"Shamba" (veggie garden), gift shop, and wood-fired sauna.
ACTIVITIES	Game drives, horse riding, cycling, walking, kids' activities.

SOLI LODGE

laikipia

owned and operated by
THE SAFARI COLLECTION

Mount Kenya



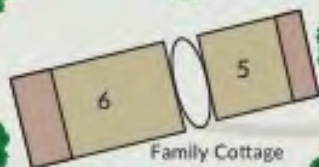
GPS Coordinates:
0.162048°S, 36.903076°E



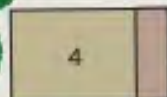
Mwaiyogo River

Watering hole

Outdoor Dining Platform



Family Cottage

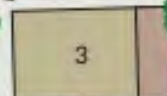


4

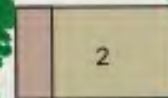


Reception,
Lounge & Dining Area

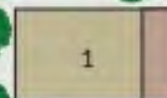
Sauna



3



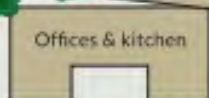
2



1



Vegetable garden

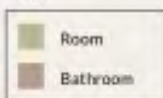


Offices & kitchen



Garage

KEY



Room

Bathroom

SOLIO LODGE

COTTAGES – CHILDREN ALL AGES

# COTTAGES	5 (1 family cottage) Max 10 adults, 2 children	POOL	X
EXTRA BEDS	✓ On request	IN-ROOM WIFI	✓
TWIN BEDS	✓ 3 cottages plus 2 nd room in family cottage	MINI BAR	✓
BATHROOM	En-suite	AIR CON	X
SHOWER	✓ Indoor	FAN	✓ On request
BATH	✓	MOZZIE NET	X
HAIRDRYER	✓	LAUNDRY	✓ Included
ROOM SAFE	✓	DISABLED	✓



COTTAGE DESCRIPTION:

LUXURY COTTAGES X 4

The Solio cottages are centred around rest and relaxation. High thatched roofs and floor-to-ceiling glass windows create a lovely feeling of space and bring the outdoors in, while open fireplaces in both the bedroom and bathrooms creates a cosy atmosphere. Double-ended freestanding bathtubs and huge rain showers come as standard, along with double sinks, ample wardrobe space and comfortable seating areas.

FAMILY COTTAGE X 1

The family cottage comprises rooms 5 and 6 with a shared lounge between them, and ample garden space out front for kids to enjoy. As these cottages are exactly like the double cottages, this provides the ideal setting not only for families but also for 2 couples travelling together. And if this cottage is booked, families can be accommodated in the double cottages with added beds (on request only).



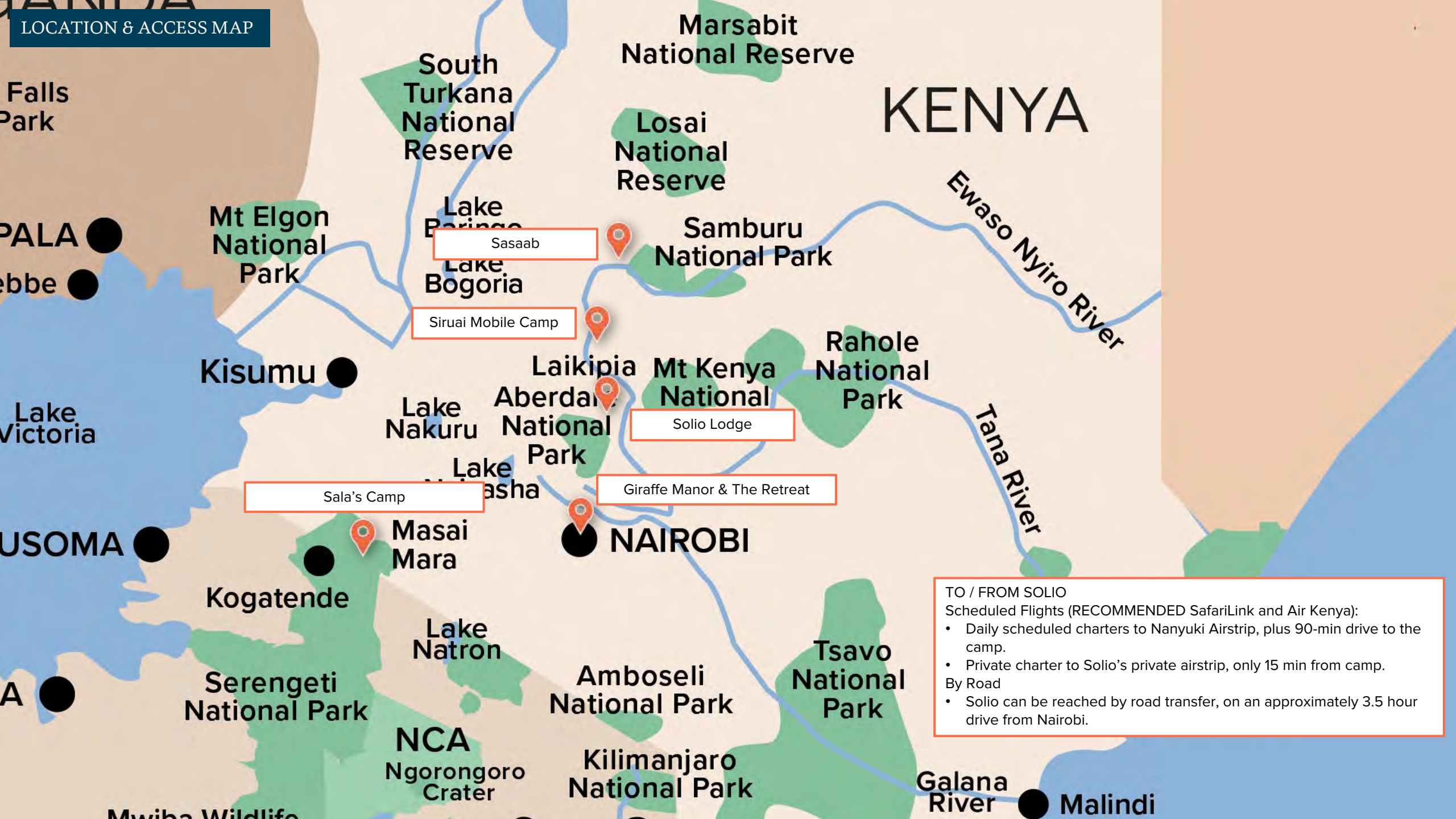
ACTIVITIES & EXPERIENCES

GAME DRIVES	Morning and afternoon drives.
PRIVATE VEHICLES	Included with all bookings.
HELI TRIPS	Variety of excursions to untouched and remote locations in Kenya, including Mount Kenya and Aberdare National Park. Available for anyone 2+ years. <i>Book in advance, extra cost.</i>
VISIT TO NEARBY FARMS	Cinnabar Green Farm - where Solio's amenities come from. Flower Farm – rose farm supporting local communities.
COFFEE FARM	Tour a working coffee plantation. 45-min drive from Solio. <i>Book in advance and not possible on Sundays.</i>
HORSERIDING	5 resident horses. Available for all riding levels, with different routes for more experienced riders. Helmets are provided.
CYCLING	Mountain bikes for adults and kids. Guided outing. Flexible timing and duration per each guest.
WALKING	Guided walks on the ranch.
KIDS SAFARI	Wide variety of kids activities.



WILDLIFE SIGHTINGS

	HIGH	MEDIUM	LOW	DOES NOT OCCUR HERE
LION	✓			
LEOPARD	✓			
CHEETAH			✓	
ELEPHANT			✓	
RHINO – WHITE & BLACK	B&W			
BUFFALO	✓			
GIRAFFE	✓			
ZEBRA	✓			
HIPPO				X
CROCODILE				X
WILD DOG				X
HYENA - SPOTTED		✓		
AARDVARK			✓	
MIGRATION	✓			
GENERAL ANTELOPE SPECIES	✓			
VARIETY OF BIRD LIFE	✓			
SPECIAL SIGHTING FOR THIS AREA	The impressive numbers of black and white rhinos on the reserve, reticulated giraffe, eland, and waterbuck.			
OTHER	Specially designed roof-top benches on the safari vehicles.			



TO / FROM SOLIO
Scheduled Flights (RECOMMENDED SafariLink and Air Kenya):

- Daily scheduled charters to Nanyuki Airstrip, plus 90-min drive to the camp.
- Private charter to Solio's private airstrip, only 15 min from camp.

By Road

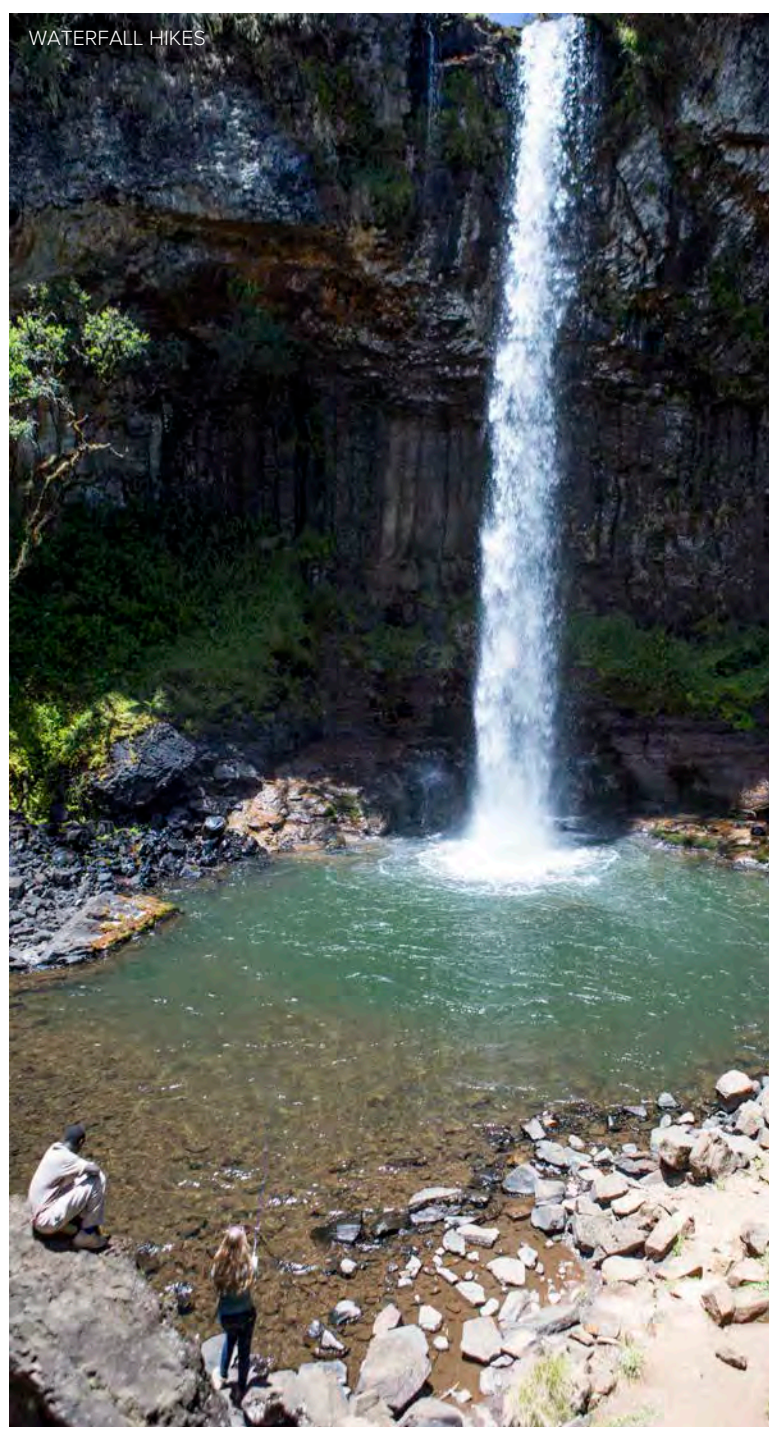
- Solio can be reached by road transfer, on an approximately 3.5 hour drive from Nairobi.



ROOM EXTERIOR



HORSE RIDING



WATERFALL HIKES



DEEP SOAKING TUB



WALKING SAFARIS



FRESH PRODUCE



SUNDOWNERS

THE SAFARI COLLECTION	SOLIO LODGE
CLASSICS CLASSIFICATION	PREMIER
IMPACT OF EACH GUEST STAY	HIGH
CHILDREN (MINIMUM AGE)	ALL
FAMILY ROOMS	✓
EXCLUSIVE CAMP / VILLAS	X
HONEYMOON OFFER	X
LAND SAFARI	✓
WATER SAFARI	X
SPECIAL ACTIVITIES	HELI EXCURSIONS, HORSE RIDING, RHINO CONSERVATION
GET INVOLVED – CONSERVATION	✓
GET INVOLVED – COMMUNITIES	X
EXPEDITION TRIPS	X
WELLNESS & MASSAGE	✓

CLASSIC CLASSIFICATIONS:

P – Premier: These camps/lodges feature luxurious amenities and are priced at a higher tier.

C – Classic: These camps/lodges offer a more down-to-earth experience and are priced at a mid-level rate.

E – Expedition: These experiences are best suited for small groups or trips led by private guides.

IMPACT OF EACH GUEST STAY:

L – Low

M – Medium

H – High

VH – Very High

Based on the following 4 considerations we look at the positive impact that each guest is making by staying here:

- Transferability: What percentage of the daily rates is allocated to conservation and community initiatives?
- Removability: What impact would arise if the property were absent? Are there alternative lodges in the vicinity that continue to make positive contributions?
- Responsibility: To what extent does the property handle management privately, and how much is overseen as a concession under a collaborative arrangement?
- Fragility: How vulnerable is the surrounding environment and community?

WWW.THESAFARICOLLECTION.COM

reservations@thesafaricollection.com

WWW.CLASSIC-PORTFOLIO.COM

The Classics website has more detailed information, images, live availability and rates, together with our comprehensive Crib Sheet.

BOOKINGS: stitch@classic-portfolio.com

SUPPORT: info@classic-portfolio.com

CLASSIC PORTFOLIO