



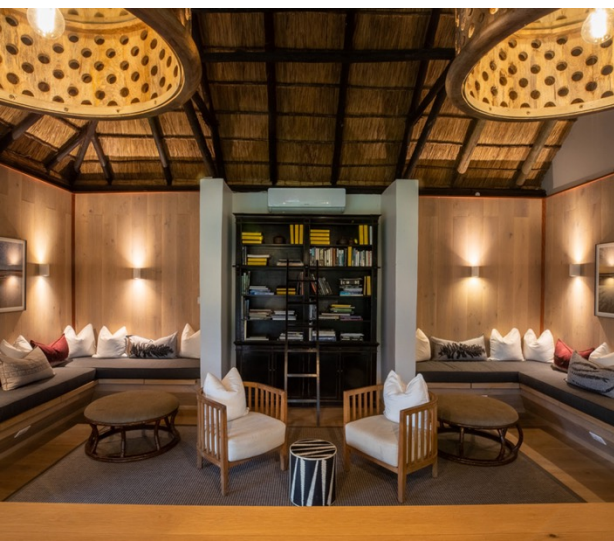
CLASSIC PORTFOLIO

The Bushcamp Company: Mfuwe Lodge & KuKaya

ZAMBIA

Updated: February 2024





GENERAL INFORMATION

CLASSIFICATION	CLASSIC: 1 lodge, 1 exclusive house, 6 villas. Open all year. Privately owned.
LAND RELATIONSHIP	Located in the South Luangwa National Park. Managed by Department of National Parks and Wildlife and supported by Luangwa Conservation & Community Fund.
OVERVIEW	Mfuwe Lodge (including the Director's House) and KuKaya are luxury accommodations just inside the entrance of the South Luangwa National Park that offer an ideal way to ease into Luangwa life. Combine a stay at any of these lodges with additional nights in the Bushcamps for a truly Zambian safari experience filled with superb wildlife viewing, exceptional guiding, and exclusivity in a remote portion of the park.
IMPACT OF YOUR STAY	LOW MEDIUM HIGH VERY HIGH The Bushcamp Company is committed to the wildlife and people of the South Luangwa and work closely with the expanding local community and conservation organisations. Through "Charity Begins At Home," they support community initiatives, including clean water access, education, meal provision, arts education, carnivore conservation, and community farming. Every guest stay contributes to park fees for Luangwa Conservation and Community Fund (LCCF) and Zambian Carnivore Program (ZCP). Additionally, a portion of revenue aids "Charity Begins at Home" initiatives, promoting sustainability and reducing carbon footprint.
ACCESS	Mfuwe International Airport (MFU) – 45-minute drive from Mfuwe Airport to Mfuwe Lodge, Director's House and KuKaya.
LODGE & VILLAS	Mfuwe Lodge – 18 chalets including 3 family chalets and 2 suites. Per person rate. Director's House – 2 rooms. Exclusive use rate. KuKaya – 6 villas. Exclusive use rate.
CHILDREN	All ages are welcome.
HEALTH	Malaria area – seek advice from your health professional. Proof of yellow fever vaccination is required if travelling from a yellow fever area.

WEATHER

The South Luangwa region has distinct weather seasons, with a dry, cool winter from May – September, and a wet hot summer from October – April.

JANUARY – MARCH
22 – 28 °C | 72 – 82 °F

The peak of the rainy season though it doesn't tend to rain all day. The bush is lush and green and wildlife is spread throughout the park.

APRIL – JUNE
18 – 28 °C | 64 – 82 °F

The rains end and temperatures drop. Beautiful safari time with comfortable conditions and wildlife movement towards water sources.

JULY – SEPTEMBER
17 – 34 °C | 63 – 93 °F

Long dry season before the rains begin. Great time of year for walks with good weather and dry conditions. Wildlife starts to congregate at water sources.

OCTOBER – DECEMBER
24 – 36 °C | 75 – 97 °F

The hottest time of the year with the rains beginning in Nov. Elephants wander through the Mfuwe Lodge lobby to get to the mango trees in Nov.

NEED TO KNOW

ELECTRICITY	220V Mains with backup generator.
WIFI & MOBILE SIGNAL	WiFi in main area at Mfuwe. All KuKaya villas and Director's House. Full mobile signal.
CREDIT CARDS	Yes.
SECURITY	Unfenced, 24-hr patrol.
MAKE AN IMPACT	Various projects through contributions to the LCCF that guests can get involved with.
GYM / KEEP FIT	Yoga mats in all rooms. Outdoor gym – Mfuwe Lodge.
SPA	Bush spa at Mfuwe Lodge
FOOD & WINE	Fully inclusive: all meals. Drinks incl at KuKaya, excl at Mfuwe Lodge. Halaal / Kosher on request.
OTHER FACILITIES	Mfuwe Lodge – photo studio, library and curio shop KuKaya – boma area, hides.
ACTIVITIES	Day and night game drives, walks, community visits, photographic safaris, spa treatments.

MFUWE LODGE

CHALETS – CHILDREN ALL AGES

# CHALETS	18 Chalets (2 suites and 3 family chalets)	POOL	✓ Main area
EXTRA BEDS	✓ Daybeds	IN-ROOM WIFI	X
TWIN BEDS	✓ All	MINI BAR	X
BATHROOM	En-suite	AIR CON	✓
SHOWER	✓ Indoor	FAN	✓ Ceiling & floor
BATH	✓ Suites only	MOZZIE NET	✓
HAIRDRYER	✓	LAUNDRY	✓ Included
ROOM SAFE	✓	DISABLED	✓

DIRECTOR'S HOUSE

EXCLUSIVE USE – CHILDREN ALL AGES

# ROOMS	2 Max 6 guests	POOL	✓ Private per villa. Unfenced. Unheated
EXTRA BEDS	✓ 2 x fold out sofas	IN-ROOM WIFI	✓
TWIN BEDS	✓ All	MINI BAR	✓
BATHROOM	En-suite	AIR CON	✓
SHOWER	✓ Indoor	FAN	✓ Ceiling & floor
BATH	X	MOZZIE NET	✓
HAIRDRYER	✓	LAUNDRY	✓ Included
ROOM SAFE	✓	DISABLED	✓

KUKAYA

VILLAS – CHILDREN ALL AGES

# VILLAS	1 x 1 bedroom 5 x 2 bedroom Max 22 guests	POOL	✓ Private per villa Unfenced. Unheated
EXTRA BEDS	✓ On request	IN-ROOM WIFI	✓
TWIN BEDS	✓ All	MINI BAR	✓
BATHROOM	En-suite	AIR CON	✓
SHOWER	✓ Only outdoor	FAN	✓ Ceiling & floor
BATH	X	MOZZIE NET	✓
HAIRDRYER	✓	LAUNDRY	✓ Included
ROOM SAFE	✓	DISABLED	X

SAFARI ACTIVITIES
Morning and afternoon drives with private vehicle and guide, walking safaris, time at the hide, sundowners in the boma, spa treatments, community visits, or photographic outings on a specialty vehicle.

WHICH ACCOMODATION TO CHOOSE:

MFUWE LODGE x 18

The chalets set under a canopy of ebony and mahogany trees around two lagoons. In addition to game drives, guests can take a swim in the pool, enjoy a spa treatment or workout on the gym, check out the library and curio shop, or take advantage of the photographic studio. Each Oct - Dec, the local elephants wander through the lobby to get to the nearby mango trees. 13 x Chalets (max 2 adults + 1 child); 2 x Suites (max 2 adults + 2 children); 3 x Family Chalets (max 2 adults + 2 children)

DIRECTOR'S HOUSE x 1

A 2-bedroom, 2-bath family villa complete with a swimming pool, large deck, pizza oven, and braai area. The House comes with a private guide and vehicle. Each room has a foldout sofa bed for additional guests. Guests can also use the gym, library, and photo studio at Mfuwe Lodge.

KUKAYA x 6

Every bedroom in both the 2-bedroom (250 m²) safari villas and 1-bedroom safari villa (190 m²) comes with its own outdoor en-suite bathroom (shower only), kitchen, outdoor dining area, deck, firepit, and private plunge pool. Choose where to enjoy your meals: the spacious boma or dining room. 1 x 1 Bedroom Villa (max 4 guests) | 5 x 2 Bedroom Villas (max 8 guests)



ACTIVITIES & EXPERIENCES

GAME DRIVES	Morning and afternoon drives.
PRIVATE VEHICLES	Included at Director's House and KuKaya. <i>Available for extra cost at Mfuwe Lodge.</i>
NIGHT DRIVES	Available with no restrictions.
GUIDED WALKS	Specialist walking guide + armed National Parks scout. Max 6 guests per walk. Guests 12+ years. Included at KuKaya. <i>Available for extra cost at Mfuwe Lodge and Director's House.</i>
ELEPHANTS IN THE MFUWE LOBBY	Late-October to Mid-December.
HIDES	Available at KuKaya..
COMMUNITY AND CULTURE	Visit a local village, school & textile company.
PHOTOGRAPHIC SAFARIS	Specially-adapted photographic vehicle available. Can be taken onwards to Bushcamps too. <i>Book in advance.</i>



WILDLIFE SIGHTINGS

	HIGH	MEDIUM	LOW	DOES NOT OCCUR HERE
LION	✓			
LEOPARD	✓			
CHEETAH				X
ELEPHANT	✓			
RHINO – WHITE & BLACK				X
BUFFALO	✓			
GIRAFFE	✓			
ZEBRA	✓			
HIPPO	✓			
CROCODILE	✓			
WILD DOG	✓			
HYENA - SPOTTED	✓			
AARDVARK			✓	
MIGRATION				X
GENERAL ANTELOPE SPECIES	✓			
VARIETY OF BIRD LIFE	✓			
SPECIAL SIGHTING FOR THIS AREA	Carmine bee-eaters (in September), Thornicroft's giraffe, Pel's fishing owl.			
OTHER	South Luangwa is the Valley of the Leopard, here you can be assured of excellent big cat sightings together with exceptional bird watching and a wide variety of other game.			

LOCATION & ACCESS MAP

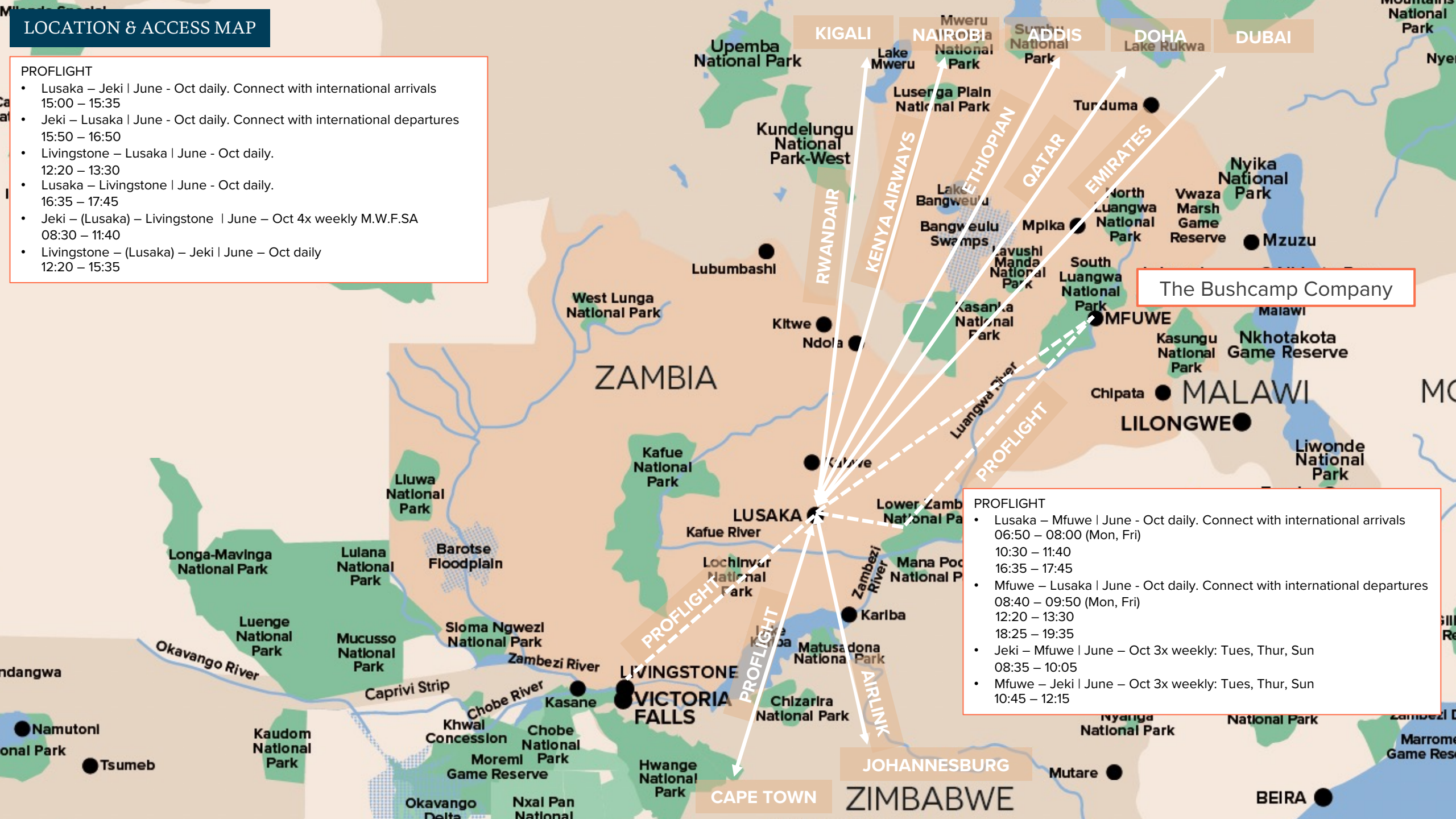
PROFLIGHT

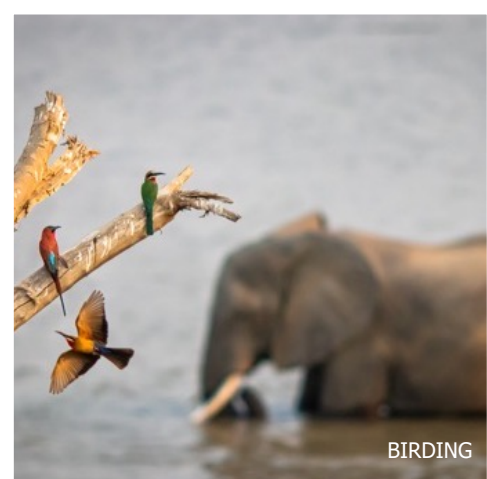
- Lusaka – Jeki | June - Oct daily. Connect with international arrivals 15:00 – 15:35
- Jeki – Lusaka | June - Oct daily. Connect with international departures 15:50 – 16:50
- Livingstone – Lusaka | June - Oct daily. 12:20 – 13:30
- Lusaka – Livingstone | June - Oct daily. 16:35 – 17:45
- Jeki – (Lusaka) – Livingstone | June – Oct 4x weekly M.W.F.SA 08:30 – 11:40
- Livingstone – (Lusaka) – Jeki | June – Oct daily 12:20 – 15:35

The Bushcamp Company

PROFLIGHT

- Lusaka – Mfuwe | June - Oct daily. Connect with international arrivals 06:50 – 08:00 (Mon, Fri) 10:30 – 11:40 16:35 – 17:45
- Mfuwe – Lusaka | June - Oct daily. Connect with international departures 08:40 – 09:50 (Mon, Fri) 12:20 – 13:30 18:25 – 19:35
- Jeki – Mfuwe | June – Oct 3x weekly: Tues, Thur, Sun 08:35 – 10:05
- Mfuwe – Jeki | June – Oct 3x weekly: Tues, Thur, Sun 10:45 – 12:15





BIRDING



MFUWE LODGE CHALET INTERIOR



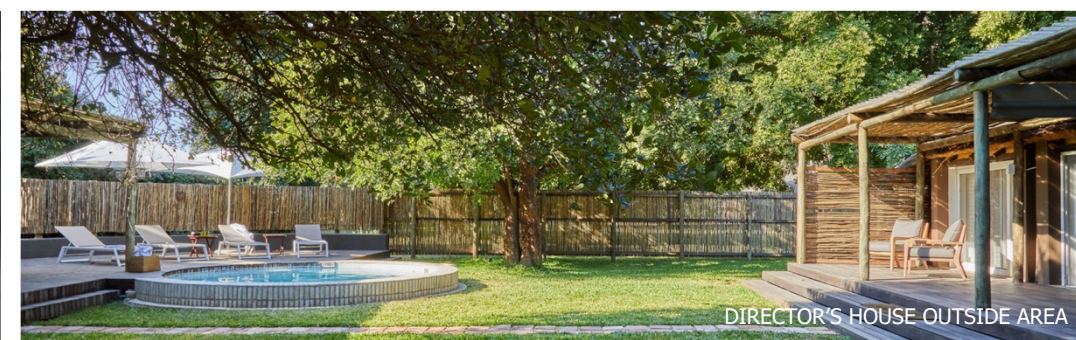
MOUTH-WATERING MEALS



DIRECTOR'S HOUSE ROOM INTERIOR



GAME DRIVES



DIRECTOR'S HOUSE OUTSIDE AREA



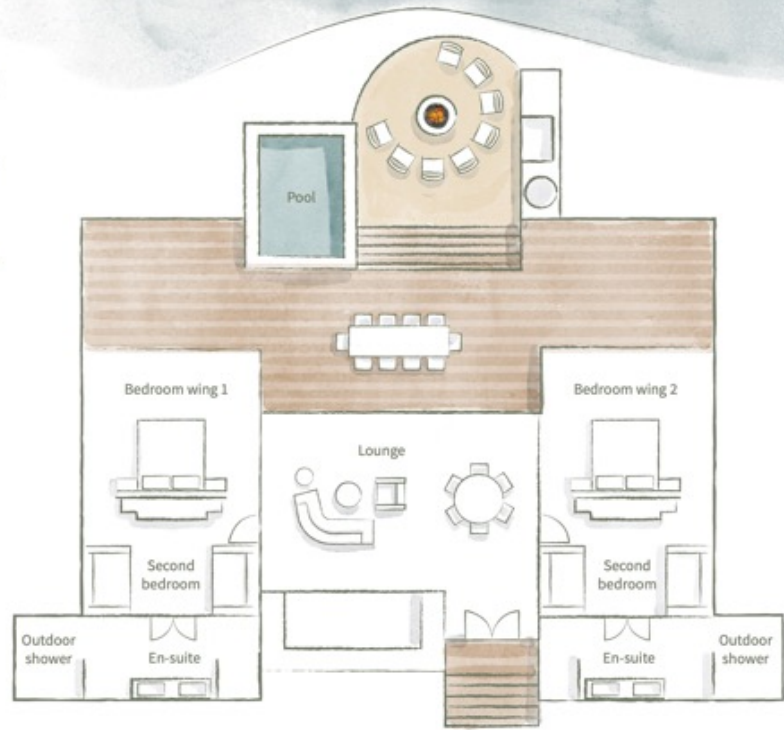
MFUWE LODGE VIEWING DECK



MFUWE LODGE DINING AREA

DOUBLE CHALET

- Private guide and vehicle
- 250m²
- Sleeps minimum 4
- 2 large tents with en-suite bathrooms
- Outdoor showers
- Plunge pool
- Private lounge
- WiFi
- Fire pit

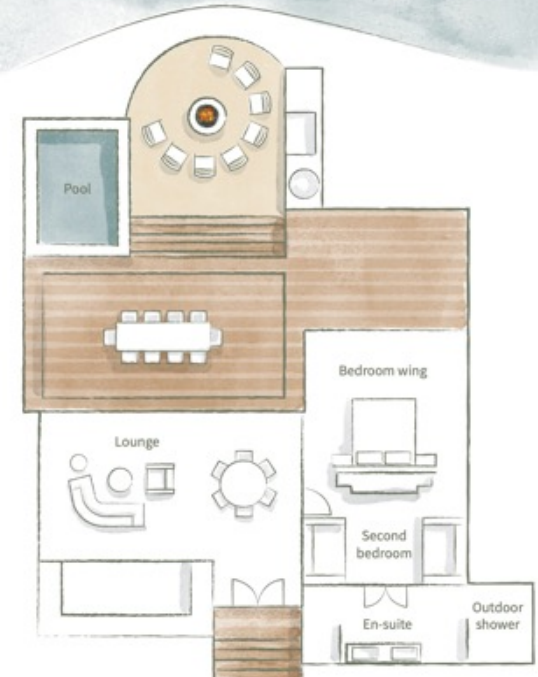


DELICIOUS FARM TO FORK DINING



SINGLE CHALET

- Private guide and vehicle
- 190m²
- Sleeps minimum 2
- Large tent with en-suite bathroom
- Additional sleeping space available
- Outdoor shower
- Plunge pool
- Private lounge
- WiFi
- Fire pit



VILLA OUTDOOR AREA



VIEWING DECK



SPACIOUS ROOMS



THE BUSHCAMP COMPANY	MFUWE LODGE DIRECTOR'S HOUSE KUKAYA
CLASSICS CLASSIFICATION	CLASSIC
IMPACT OF EACH GUEST STAY	HIGH
CHILDREN (MINIMUM AGE)	ALL
FAMILY ROOMS	✓
EXCLUSIVE CAMP / VILLAS	✓
HONEYMOON OFFER	X
LAND SAFARI	✓
WATER SAFARI	X
SPECIAL ACTIVITIES	ELLIES IN THE LOBBY, SAFARI WALKS, PHOTOGRAPHIC VEHICLE
GET INVOLVED – CONSERVATION	X
GET INVOLVED – COMMUNITIES	✓
EXPEDITION TRIPS	X
WELLNESS & MASSAGE	✓

CLASSIC CLASSIFICATIONS:

P – Premier: These camps/lodges feature luxurious amenities and are priced at a higher tier.

C – Classic: These camps/lodges offer a more down-to-earth experience and are priced at a mid-level rate.

E – Expedition: These experiences are best suited for small groups or trips led by private guides.

IMPACT OF EACH GUEST STAY:

L – Low

M – Medium

H – High

VH – Very High

Based on the following 4 considerations we look at the positive impact that each guest is making by staying here:

- **Transferability:** What percentage of the daily rates is allocated to conservation and community initiatives?
- **Removability:** What impact would arise if the property were absent? Are there alternative lodges in the vicinity that continue to make positive contributions?
- **Responsibility:** To what extent does the property handle management privately, and how much is overseen as a concession under a collaborative arrangement?
- **Fragility:** How vulnerable is the surrounding environment and community?

WWW.BUSHCAMPCOMPANY.COM

info@bushcampcompany.com

WWW.CLASSIC-PORTFOLIO.COM

The Classics website has more detailed information, images, live availability and rates, together with our comprehensive Crib Sheet.

BOOKINGS: stitch@classic-portfolio.com

SUPPORT: info@classic-portfolio.com

CLASSIC PORTFOLIO