

CLASSIC PORTFOLIO

The Bushcamp Company

SOUTH LUANGWA NATIONAL PARK, ZAMBIA

6 authentic bushcamps & 2 lodges inside the main gate

Here you discover an unrivalled safari experience in a park that is widely recognised as the holy grail of wildlife destinations in Africa.

www.bushcampcompany.com

WILD AUTHENTIC LUXURY

In Zambia's iconic South Luangwa National Park, The Bushcamp Company operates six exclusive bush camps in the remote south of the park, as well as the award-winning Mfuwe Lodge and the brand-new KuKaya is just inside the main park gate.

While the name Bushcamps may be misleading, these are super chic camps, each with an individual style. As the safari industry becomes increasingly commoditised it is refreshing to find a balanced safari style that combines the cocooning of luxury and safety with wild connected safaris. With The Bushcamp Company's expert guides you not only see Africa from a vehicle, but step off and feel, hear and smell Africa on foot.

Founded by Andy Hogg, the company continues to be run from its headquarters at Mfuwe Lodge while remaining the only safari operator in the southern section of the park, guaranteeing intimacy, seclusion, and an unrivalled wildlife experience.

LOCATION

South Luangwa National Park, Zambia

ACCESS

Fly:
Fly from Lusaka Airport to Mfuwe Airport, then road transfer to Mfuwe Lodge and the bushcamps.

Drive:
40 min from Mfuwe Airport to Mfuwe Lodge. Between 1 hr 15 min and 3 hr 30 min drive between Mfuwe Lodge and the bushcamps.



What we love

6 X 6 PLUS ONE

6 stylish Bushcamps in 6 unique locations plus award-winning Mfuwe Lodge, exclusive-use Director's House, and the brand-new KuKaya.

DON'T BE FOOLED

If you think a bush camp is basic, think again. Situated in the iconic South Luangwa National Park, one of the greatest wildlife sanctuaries on the planet, these camps ooze wild luxury.

EXPERIENTIAL SAFARIS

Authentic adventures by vehicle or on foot, in the very place where walking safaris were pioneered.

ELEPHANTS IN THE LOBBY

In November, witness elephants walking through reception at Mfuwe Lodge as they seek out the wild mangoes on age-old migration paths.

CLASSIC PORTFOLIO

Private • Unique • Committed

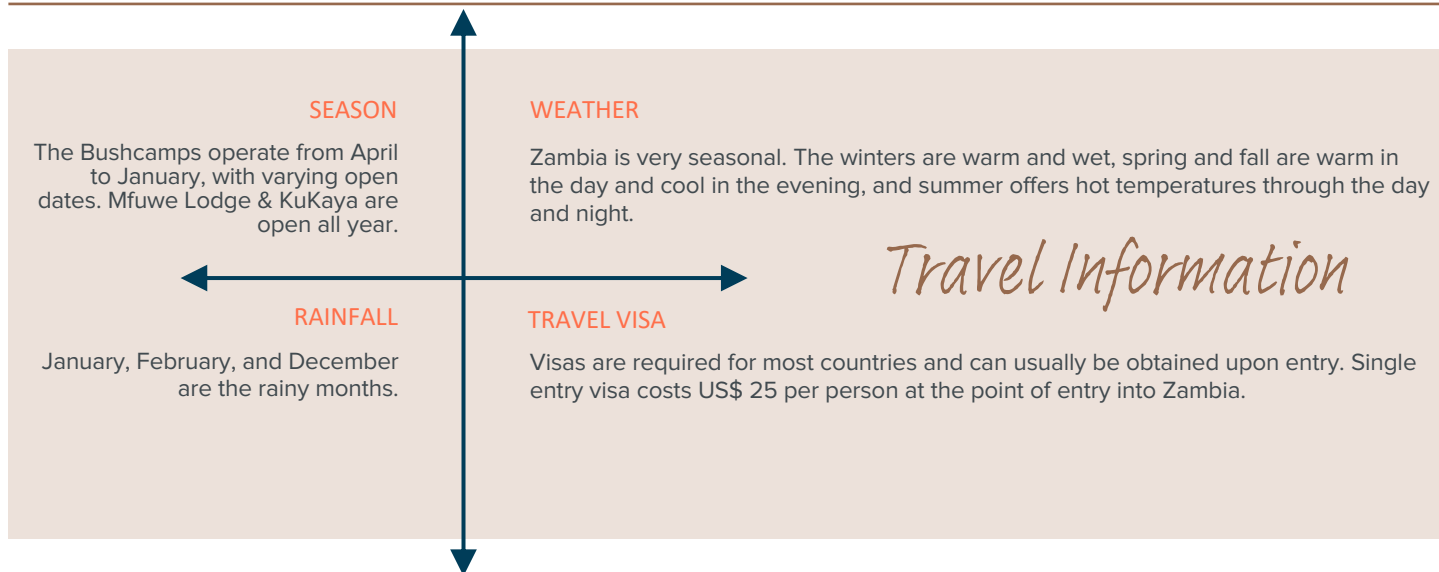


hello@classic-portfolio.com

www.classic-portfolio.com

The Bushcamp Company

LOWER ZAMBEZI NATIONAL PARK, ZAMBIA



HEALTH

CURRENCY

Malaria area – seek advice from your health professional	US Dollar (USD) & Zambian Kwacha (ZMW)
Yellow Fever Vaccination required if you transit through or live in a high risk yellow fever country	

GPS COORDINATES	Mfuwe Lodge	KuKaya	Kuyenda	Chamilandu
Latitude	13.04784 S	13.05432 S	13.11417 S	13.19006 S
Longitude	31.47430 E	31.47389 E	31.40569 E	31.38342 E
	Chindeni	Bilimungwe	Kapamba	Zungulila
Latitude	13.22030 S	13.23295 S	13.22964 S	13.21114 S
Longitude	31.36436 E	31.34198 E	31.31564 E	31.30892 E

TEMPERATURE	Jan - Mar	Apr - Jun	Jul - Sep	Oct – Dec
Average day	31°C 88°F	24°C 75°F	26°C 79°F	37°C 98°F
Average night	20°C 68°F	11°C 52°F	20°C 68°F	28°C 82°F

The Bushcamp Company

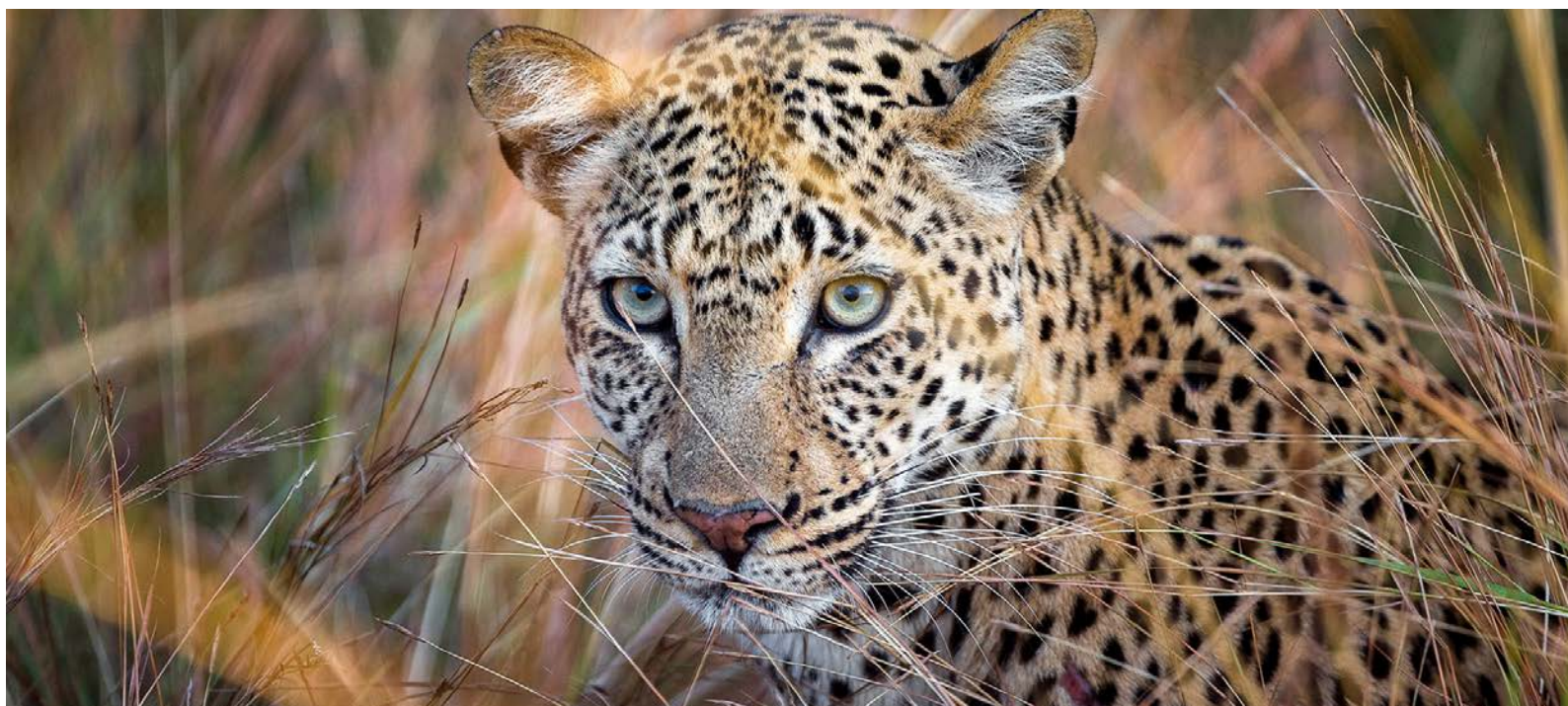
LOWER ZAMBEZI NATIONAL PARK, ZAMBIA

The Impact of Your Stay

For many years, the safari operators in the Luangwa Valley have been working with the Conservation South Luangwa (CSL) to ensure continued conservation. The Bushcamp Company also runs individual educational and conservation programs in the community with great success through their fund **"Charity Begins At Home"**

Every stay contributes through:

- Paying US\$ 110 (Bushcamps), US\$ 80 (Mfuwe) or US\$ 65 (KuKaya) per person per day for Park Fees, Luangwa Conservation and Community Fund (LCCF), and Zambian Carnivore Program (ZCP).
- Supporting LCCF where fees are equally allocated to conservation and community development projects in the valley.
- Paying to stay at the camps where a portion of bednight revenue is allocated to The Bushcamp Company's **Charity Begins at Home** initiatives:
 1. **Commit to Clean Water:** it is estimated that in Africa alone, over 345 million people are without access to clean water. Through The Bushcamp Company, 155 boreholes have been drilled giving over 300 people per borehole per day access to clean water. This impacts over 46 500 people per day.
 2. **Education Fund:** has supported over 1 000 children in completing their education and built 34 classrooms, 4 ablution blocks, 4 dormitories, 4 teachers' houses, 2 halls, 2 kitchens and a library.
 3. Through the **Meal-A-Day** programme, over 3 150 meals are provided per day to school children. Some students have to get up at 5am to walk 15 km to school, do a full day of lessons, and then walk home with nothing to eat.
 4. **Education Through Art:** SEKA (Sensitisation and Education through Kunda Arts) is a Zambian NGO, initiated and based in Mfuwe. It uses participatory theatre to sensitise and educate communities on various important social and environmental issues.
 5. **Conservation:** The Zambian Carnivore Programme (ZCP) is a non-profit Zambian trust dedicated to conserving large carnivore species and their habitat in Zambia. The Bushcamp Company helps fund-raise for ZCP, and guides report carnivore sightings as part of their Luangwa Valley Carnivore Monitoring Programme.
 6. **Cultivating for the Community:** During the COVID crisis, The Bushcamp Company started a cultivation project. From 5 000 mango and 300 paw paw trees to radishes, cabbage and 2 000 citrus trees, they are cultivating crops, together with delicious honey from 35 beehives. As the farm, just outside Mfuwe village, continues to grow and develop, so does the training and employment opportunity for the local community. At the same time, they are able to reduce their carbon footprint as they no longer need food transport to come from hundreds of miles away.



The Bushcamp Company

LOWER ZAMBEZI NATIONAL PARK, ZAMBIA

Facilities	<i>Mfuwe Lodge</i>	<i>KuKaya</i>	<i>Chamilandu</i>	<i>Bilimungwe</i>
MAXIMUM GUESTS	41	44	6	8
CHILDREN	All ages	All ages	12+ yrs	12+ yrs
CHILDMINDING	On request	On request	–	–
FENCED / SECURITY	Unfenced	Unfenced	Unfenced	Unfenced
ELECTRICITY	220V mains	220V mains & generator	Solar power	Solar power
CHECK IN	14:00	14:00	N/A	N/A
CHECK OUT	11:00	11:00	N/A	N/A
WI-FI AVAILABLE	Main library	✓	–	–
CREDIT CARDS	✓	✓	–	–
SWIMMING POOL	✓	–	–	–
KEEP FIT	Yoga	Yoga	Yoga	Yoga
SPA FACILITIES	✓	✓	–	–
OTHER	Director's House (2 bed, 2 bath family villa) comes with private chef and vehicle, and a private pool	Deli Camp hide	Camp hide	Riverside boma and star deck

The Bushcamp Company

LOWER ZAMBEZI NATIONAL PARK, ZAMBIA

Facilities	<i>Kuyenda</i>	<i>Chindeni</i>	<i>Kapamba</i>	<i>Zungulila</i>
MAXIMUM GUESTS	12	8	8	8
CHILDREN	12+ yrs	12+ yrs	12+ yrs	12+ yrs
CHILDMINDING	–	–	–	–
FENCED / SECURITY	Unfenced	Unfenced	Unfenced	Unfenced
ELECTRICITY	Solar power	Solar power	Solar power	Solar power
CHECK IN	N/A	N/A	N/A	N/A
CHECK OUT	N/A	N/A	N/A	N/A
WI-FI AVAILABLE	–	–	–	–
CREDIT CARDS	–	–	–	–
SWIMMING POOL	–	–	✓	–
KEEP FIT	yoga	yoga	yoga	yoga
SPA FACILITIES	–	–	–	–
OTHER	–	Fire pit on a deck	2 rooms have raised sleep-out decks	Boma and fire pit

The Bushcamp Company

LOWER ZAMBEZI NATIONAL PARK, ZAMBIA

Chalets & Tents	Mfuwe Lodge	KuKaya	Chamilandu	Bilimungwe
NUMBER OF ROOMS	19*	6	3	4
EXTRA BEDS	✓	✓	✓	✓
IN-ROOM WIFI	✓	✓	–	–
AIR CONDITIONER	✓	–	–	–
FAN	✓	✓ (Ceiling & floor)	✓ (standing fan)	✓ (standing fan)
IN-ROOM SAFE	✓	✓	–	–
POOL	–*	✓	–	–
INDOOR SHOWER	✓	–	✓	✓
OUTDOOR SHOWER	–	✓	–	✓
BATH	✓ (suites only)	–	–	–
DOUBLE VANITY	✓	✓	✓	✓
MOSQUITO NETS	✓	✓	✓	✓
MINI BAR	–	–	–	–
CAMP COMMUNICATION	–	–	–	–
HAIRDRYER	✓	–	–	–
LAUNDRY INCLUDED	✓	–	✓	✓
DISABLED ACCESS	✓	–	–	–

*NUMBER OF CHALETS: Mfuwe Lodge has 2 suites, 3 family rooms, 13 double / twin rooms, plus the Director's House.

*POOL: The Director's House has a private pool

The 19 air-conditioned chalets (including the Director's House) are set under a canopy of ebony and mahogany trees around two lagoons. Each en-suite chalet has a private deck, indoor seating area, and double vanity. Additionally, the suites have baths and both suites and family chalets have extra daybeds.	Mfuwe Lodge Chalets
A 2-bedroom, 2-bath family villa complete with a swimming pool, large deck, pizza oven, and braai area. The House comes with a private guide and vehicle as well as a private chef.	Director's House
Every bedroom in both the 5 x 2-bedroom (250 sq. meters) safari villas and 1 x 1-bedroom safari villa (190 sq. meters) boasts with its own outdoor en-suite bathroom (shower only). Each safari villa has a kitchen, sitting area, outdoor dining area, deck, firepit, pizza oven, private plunge pool.	KuKaya
Beautiful, open-fronted thatch chalets are elevated on 2m high stilts offering a bird's eye view over the Luangwa River. Each chalet is en-suite with cold and solar-heated water.	Chamilandu
The perfect location for an armchair safari, Bilimungwe overlooks 3 waterholes consistently teeming with resident elephant herds. The open-fronted thatched chalets are en-suite with indoor and outdoor showers offering cold and solar-heated water, on raised wooden decks.	Bilimungwe

The Bushcamp Company

LOWER ZAMBEZI NATIONAL PARK, ZAMBIA

Chalets & Tents	<i>Kuyenda</i>	<i>Chindeni</i>	<i>Kapamba</i>	<i>Zungulila</i>
NUMBER OF ROOMS	6	4	4	4
EXTRA BEDS	–	✓	✓	–
IN-ROOM WIFI	–	–	–	–
AIR CONDITIONER	–	–	–	–
FAN	✓ (desk fan)	✓ (standing fan)	✓ (standing fan)	✓ (standing fan)
IN-ROOM SAFE	–	–	–	–
POOL	–	–	–	–
INDOOR SHOWER	–	✓	✓	–
OUTDOOR SHOWER	✓	–	–	✓
BATH	–	–	–	✓ (outdoor)
DOUBLE VANITY	✓	✓	✓	✓
MOSQUITO NETS	✓	✓	✓	✓
MINI BAR	–	–	–	–
CAMP COMMUNICATION	–	–	–	–
HAIRDRYER	–	–	–	–
LAUNDRY INCLUDED	✓	✓	✓	✓
DISABLED ACCESS	–	–	–	–

The simplest in design of the bushcamps, Kuyenda is surrounded by salt pans, dry river beds, mopane woodlands, the Luangwa River, and open plains. The rondavels are made of thatch and grass and have an en-suite shower with hot and cold running water.	<i>Kuyenda</i>
Chindeni Bushcamp is raised on wooden decks, with the main area, deck and bar showcasing stunning views of the Chindeni Hills. Each canvas tent is en-suite with a cold and solar-heated shower.	<i>Chindeni</i>
Centered around the Kapamba River on your doorstep, this camp offers guests the chance to bathe, walk, and enjoy sundowners in the river. The chalets are open-fronted with large, en-suite double showers, and 2 chalets include raised salas perfect for midday siestas, wildlife watching, or sleeping under the stars.	<i>Kapamba</i>
With breath-taking views over the Kapamba River and an expansive plain where natural springs attract huge herds of game, Zungulila can tempt anyone to stay forever! The spacious tents offer stylish interiors, en-suite bathrooms with hot and cold running water, an outdoor shower and a spectacular outdoor bathtub.	<i>Zungulila</i>

The Bushcamp Company

LOWER ZAMBEZI NATIONAL PARK, ZAMBIA

Experiences	<i>Mfuwe Lodge</i>	<i>KuKaya</i>	<i>Chamilandu</i>	<i>Bilimungwe</i>
SAFARI VEHICLE	Open, max 6	Open, max 6	Open, max 6	Open, max 6
PRIVATE VEHICLE	Extra charge	✓	Extra charge	Extra charge
MORNING GAME DRIVES	✓	✓*	✓	✓
AFTERNOON GAME DRIVES	✓	✓*	✓	✓
BUSH WALKS	✓ (pre-booked)	Extra charge	Signature Experience*	Signature Experience*
RIVER SUNDOWNERS	–	–	–	–
STARGAZING	✓	✓	✓	✓
HIDE IN CAMP	–	✓	✓	–
PHOTOGRAPHIC SAFARIS	Extra charge*	Extra charge*	Extra charge*	Extra charge*

Experiences	<i>Kuyenda</i>	<i>Chindeni</i>	<i>Kapamba</i>	<i>Zungulila</i>
SAFARI VEHICLE	Open, max 6	Open, max 6	Open, max 6	Open, max 6
PRIVATE VEHICLE	Extra charge	Extra charge	Extra charge	Extra charge
MORNING GAME DRIVES	✓	On request	✓	✓
AFTERNOON GAME DRIVES	✓	On request	✓	✓
BUSH WALKS	✓	Signature Experience*	Signature Experience*	Signature Experience*
RIVER SUNDOWNERS	–	–	✓	✓
STARGAZING	–	–	–	–
PHOTOGRAPHIC SAFARIS	Extra charge*	–	–	–

**SIGNATURE EXPERIENCE: In the place where walking safaris were first pioneered, the recommendation of walking between camps is best done between Chindeni, Bilimungwe, Kapamba, and Zungulila; and is possible between Chindeni and Chamilandu.*

**PHOTOGRAPHIC SAFARIS: custom designed photographic vehicle with no sides is available at an extra charge; Mfuwe Lodge showcases a new photographic studio.*

**MORNING & AFTERNOON GAME DRIVES AT KUKAYA: 1 Private game drive per safari villa per day is included. Additional drives will be at an additional cost.*