

CLASSIC PORTFOLIO

The Residence Collection  
**The Residence Hotel**

JOHANNESBURG, SOUTH AFRICA





# General Information

CLASSIFICATION	<b>PREMIER:</b> Open all year.
LAND RELATIONSHIP	Privately owned boutique hotel set within landscaped gardens in Johannesburg's leafy Houghton neighbourhood.
OVERVIEW	The Residence Hotel offers a rare sense of tranquillity in Johannesburg, combining boutique luxury, personalised service and residential charm in the heart of Houghton. Individually designed rooms and suites, peaceful gardens and thoughtful hospitality create an elegant base from which to explore the city or begin and end a Southern African journey.
IMPACT OF YOUR STAY	LOW   <b>MEDIUM</b>   HIGH   VERY HIGH The Residence Hotel forms part of The Residence Collection, which supports a range of community-led initiatives across South Africa and Zambia, focusing on education, youth development, women's empowerment and animal welfare.
ACCESS	DRIVE: Approximately 25 minutes from OR Tambo International Airport (JNB), and around 20 minutes from both Sandton and Rosebank.
LODGE & VILLAS	9 Luxury Rooms – Per room rate 3 Luxury Suites – Per room rate 2 One-Bedroom Suites – Per suite rate 2 Pool Villa – Per villa rate 1 Madiba Suite – Per suite rate 1 Penthouse – Per suite rate
CHILDREN	Children of all ages are welcome.
HEALTH	Malaria free. No vaccinations required. Full medical facilities, hospitals and pharmacies are available nearby in Johannesburg.

## Need to know

OPERATING SEASON	Open all year	GYM / KEEP FIT	Yes – Gym & Pool
ELECTRICITY	220V Mains with generator back-up.	SPA / MASSAGE	Yes
WIFI & MOBILE SIGNAL	Wi-Fi in all rooms and main areas. Full mobile signal.	FOOD & WINE	Breakfast included. À la carte lunch and dinner available. Halaal and kosher meals available on request.
CHECK-IN CHECK-OUT	From 14h00 Until 11h00	GUIDE ROOM	Yes
CREDIT CARDS	Yes - all accepted.	OTHER FACILITIES	Boutique, concierge, two swimming pools (one heated), landscaped gardens, guest lounges.
SECURITY	Gated property with 24-hour security.	ACTIVITIES	Spa treatments, city tours, cultural & historical excursions, shopping, golf, relaxation in the gardens and around the pools.

## Weather

Johannesburg enjoys a mild, high-altitude climate with warm summers, cool, dry winters and abundant sunshine throughout the year. Summer (October to March) brings afternoon thunderstorms that are typically short-lived, while winter (May to August) offers crisp mornings, clear blue skies and comfortable daytime temperatures. Spring and autumn are particularly pleasant, making The Residence Hotel an inviting destination in every season.

**JANUARY – MARCH**  
15 – 27 °C | 59 – 81 °F  
Warm summer days with lush gardens and regular afternoon thunderstorms. Mornings are generally clear, with sunshine returning soon after the rain.

**JULY – SEPTEMBER**  
4 – 22 °C | 39 – 72 °F  
Winter is typically dry with crisp mornings, sunny afternoons and cool evenings. Clear skies and comfortable daytime temperatures make this an excellent time to explore the city.

**APRIL – JUNE**  
7 – 24 °C | 45 – 75 °F  
Autumn brings cooler mornings, mild sunny days and very little rainfall. The gardens take on rich autumn colours, making this one of Johannesburg's most pleasant seasons.

**OCTOBER – DECEMBER**  
12 – 27 °C | 54 – 81 °F  
Spring gives way to summer as the days become warmer and longer. Afternoon thunderstorms become more frequent, while the city's gardens and jacaranda-lined streets come to life.

## LUXURY ROOMS & SUITES

CHILDREN ALL AGES

# ROOMS	9 Luxury Rooms 3 Luxury Suites	POOL	✓ Two shared swimming pools (one heated) Private Jacuzzi / Hot Tub in selected suites
EXTRA BEDS	✓ (Suites only)	SPA	✓ On-site spa & In room massages
TWIN BEDS	✓ All rooms	MINI BAR	✓
BATHROOM	En-suite	AIR CON	✓
SHOWER	✓ Indoor/Outdoor	FAN	✓ On request
BATH	✓ Indoor/Outdoor	MOZZIE NET	✗ Malaria free
HAIRDRYER	✓	LAUNDRY	✓ Extra charge
ROOM SAFE	✓	DISABLED ACCESS	✗

### LUXURY ROOMS & SUITES DESCRIPTIONS

**LUXURY ROOMS**  
Elegant, individually designed rooms with king-size extra-length beds, en-suite bathrooms and private balconies or courtyards. Selected rooms feature outdoor showers and outdoor baths.  
*Maximum occupancy: 2 adults*

**LUXURY SUITES**  
Spacious suites with en-suite bathrooms and additional living space. Selected suites feature fireplaces, Jacuzzis, outdoor showers or outdoor baths.  
*Maximum occupancy: 2 adults + 1 child (0–17 years)*

## ONE-BEDROOM SUITES & POOL VILLAS

CHILDREN ALL AGES

# ROOMS	2 One-Bedroom Suites 2 Pool Villas	POOL	✓ Two shared swimming pools (one heated) Private Jacuzzi / Hot Tub in selected rooms and suites
EXTRA BEDS	✓	SPA	✓ On-site spa & In room massages
TWIN BEDS	✓ All rooms	MINI BAR	✓
BATHROOM	En-suite	AIR CON	✓
SHOWER	✓ Indoor/Outdoor	FAN	✓ On request
BATH	✓ Indoor/Outdoor	MOZZIE NET	✗ Malaria free
HAIRDRYER	✓	LAUNDRY	✓ Extra charge
ROOM SAFE	✓	DISABLED ACCESS	✗

### ONE-BEDROOM SUITES & POOL VILLAS DESCRIPTIONS

**ONE-BEDROOM SUITES**  
Generously proportioned suites with a separate lounge, en-suite bathroom and spacious patio overlooking the gardens. Each suite features a private Jacuzzi, outdoor dining area and pool loungers.  
*Maximum occupancy: 2 adults + 1 child (0–17 years)*

**POOL VILLAS**  
Private villas with a separate lounge, en-suite bathroom, fireplace and heated plunge pool. Outdoor living areas, a Jacuzzi, outdoor shower and spa bath create a secluded retreat.  
*Maximum occupancy: 2 adults + 2 children (0–17 years)*



LUXURY ROOM



ONE-BEDROOM SUITE



PENTHOUSE



PENTHOUSE

## PENTHOUSE & MADIBA SUITE

CHILDREN ALL AGES

# ROOMS	1 Madiba Suite 1 Penthouse	POOL	✓ Two shared swimming pools (one heated) Private Jacuzzi / hot tub
EXTRA BEDS	X	SPA	✓ On-site spa & In room massages
TWIN BEDS	✓ All rooms	MINI BAR	X
BATHROOM	En-suite	AIR CON	✓
SHOWER	✓	FAN	✓ On request
BATH	✓ 3 rooms (not Petite)	MOZZIE NET	X Malaria free
HAIRDRYER	✓	LAUNDRY	✓ Extra charge
ROOM SAFE	✓	DISABLED ACCESS	X

### PENTHOUSE & MADIBA SUITES DESCRIPTIONS

**PENTHOUSE** An expansive top-floor suite with a separate lounge, en-suite bathroom and panoramic views over Houghton and Rosebank. Features include a private Jacuzzi, outdoor spa bath, outdoor shower and fireplace.  
*Maximum occupancy: 2 adults*

**MADIBA SUITE** The hotel's largest suite, offering a separate lounge, en-suite bathroom, fireplace and private outdoor living areas with a hot tub, outdoor shower and dining terrace.  
*Maximum occupancy: 2 adults*



MADIBA SUITE



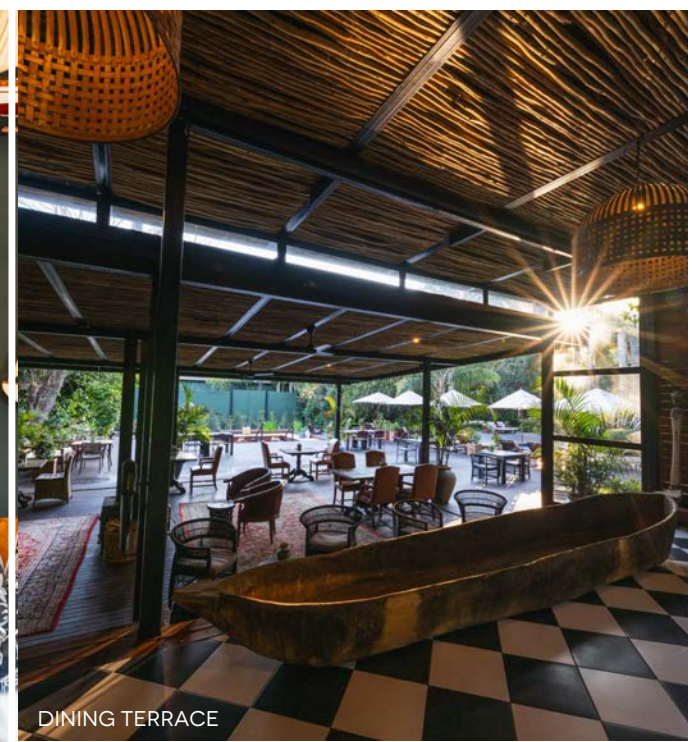
MADIBA SUITE



EXTERIOR



LOUNGE DECOR



DINING TERRACE



EXCEPTIONAL DINING EXPERIENCES



TOP TIER HOSPITALITY



TRAVEL IN STYLE



SPA AREA

# Activities & Experiences

## SPA & WELLNESS

Relax with a range of spa treatments and wellness therapies or enjoy the hotel's gym and heated pool.

## JOHANNESBURG CITY TOURS

Discover Johannesburg's history, culture and vibrant neighbourhoods with guided city excursions.

## SOWETO EXPERIENCES

Explore one of South Africa's most iconic townships, visiting historical landmarks, museums and local community projects.

## APARTHEID & MANDELA HERITAGE

Visit Constitution Hill, the Apartheid Museum and Nelson Mandela's former home to gain insight into South Africa's remarkable history.

## ART, SHOPPING & DINING

Browse boutique stores, galleries and markets, or enjoy Johannesburg's thriving food scene with recommendations from the concierge.

## GOLF

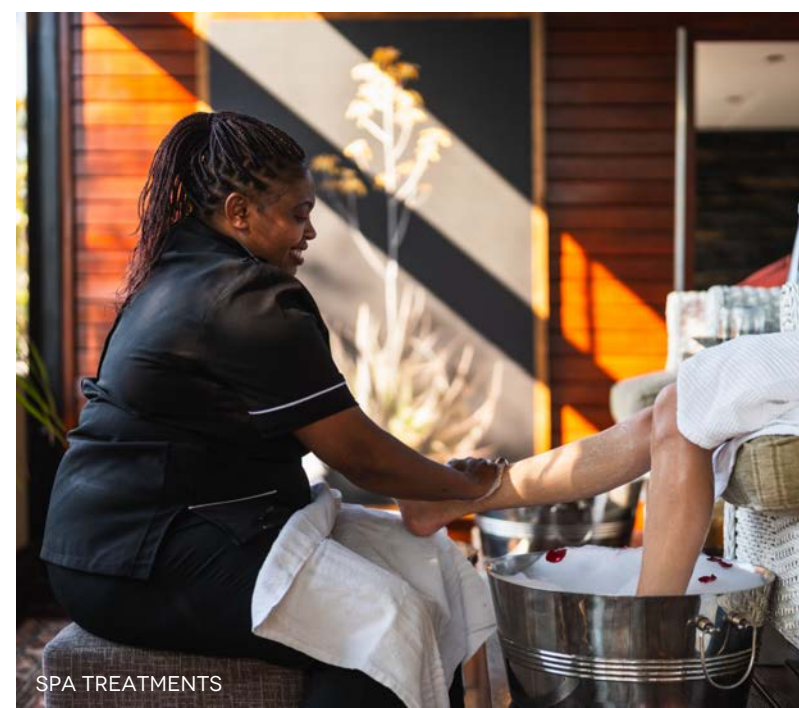
Play at a selection of Johannesburg's premier golf courses, all within easy reach of the hotel.

## PRIVATE DINING

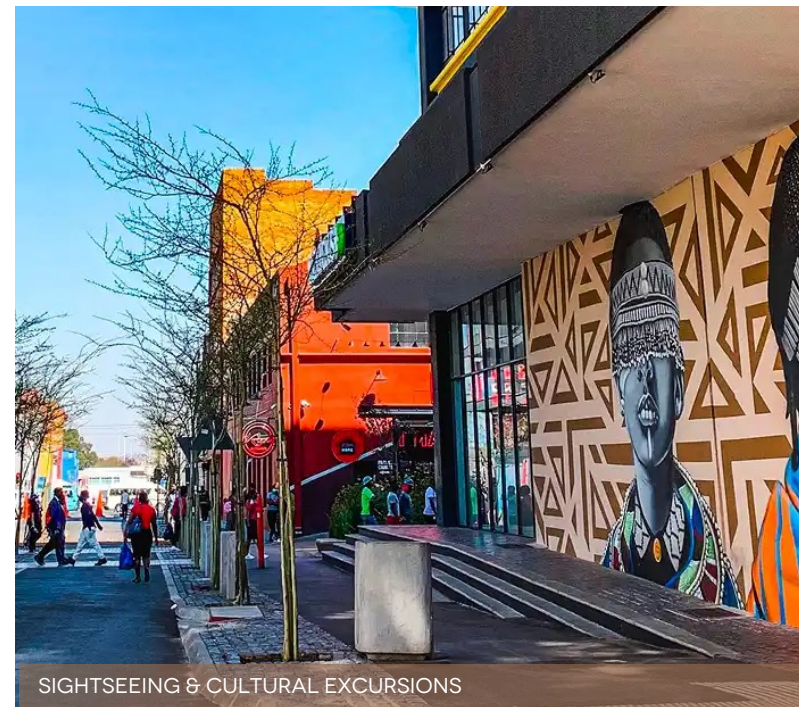
Celebrate a special occasion with a tailored private dining experience in one of the hotel's intimate settings.

## CONCIERGE SERVICE

Arrange airport transfers, restaurant reservations, spa appointments and personalised sightseeing itineraries.



SPA TREATMENTS



SIGHTSEEING & CULTURAL EXCURSIONS

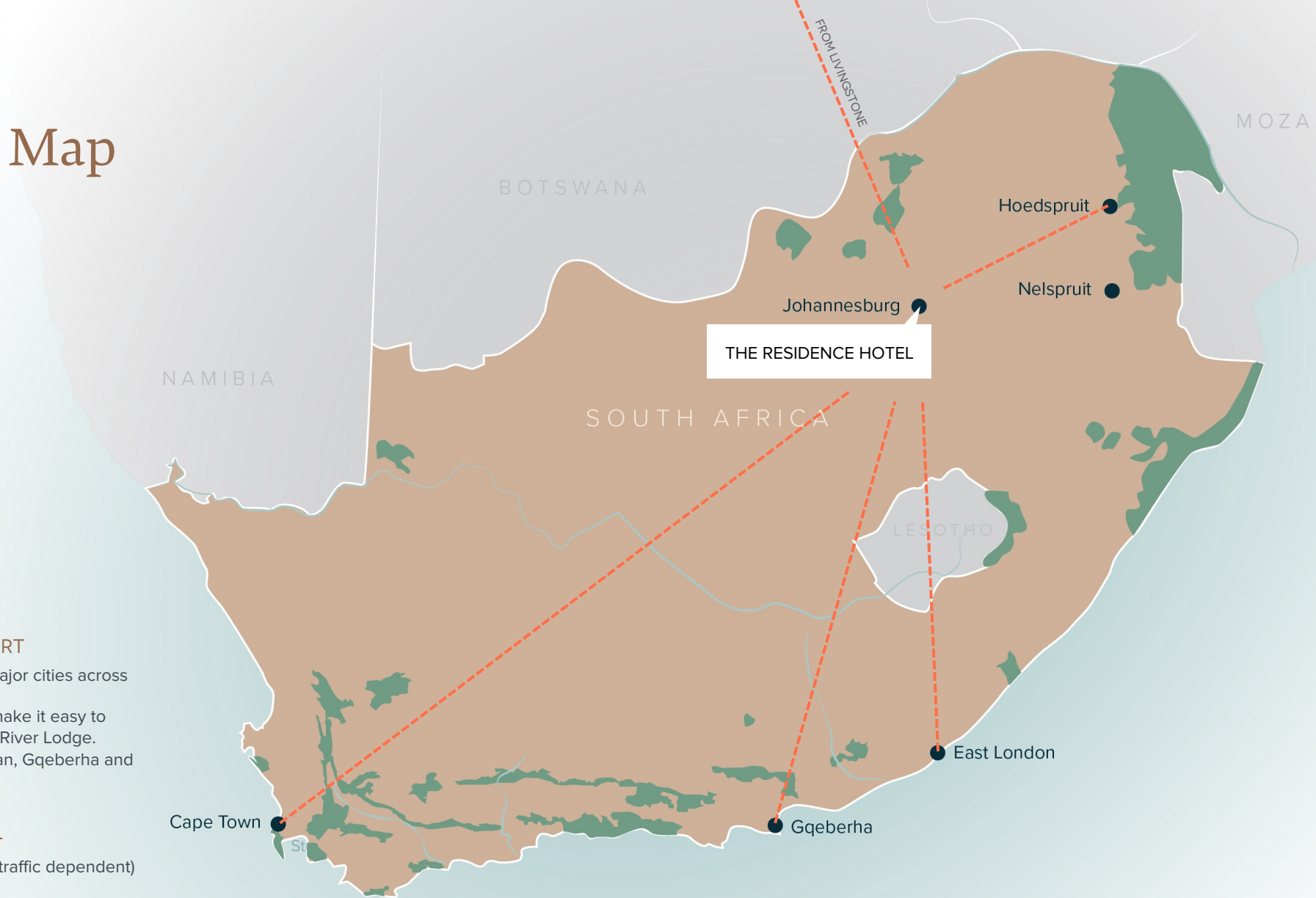


FOOD & WINE EXPERIENCES

# Location & Access Map

## Driving Access

- CONNECTIONS TO O.R. TAMBO AIRPORT**
  - Direct flights connect Johannesburg with major cities across Southern and East Africa.
  - Daily direct flights to Livingstone (Zambia) make it easy to combine The Residence Hotel with Mukwa River Lodge.
  - Frequent direct flights to Cape Town, Durban, Gqeberha and Kruger gateways.
- DRIVING TO THE RESIDENCE HOTEL**
  - O.R. Tambo International Airport: 25 mins (traffic dependent)





BOUTIQUE GIFT SHOP



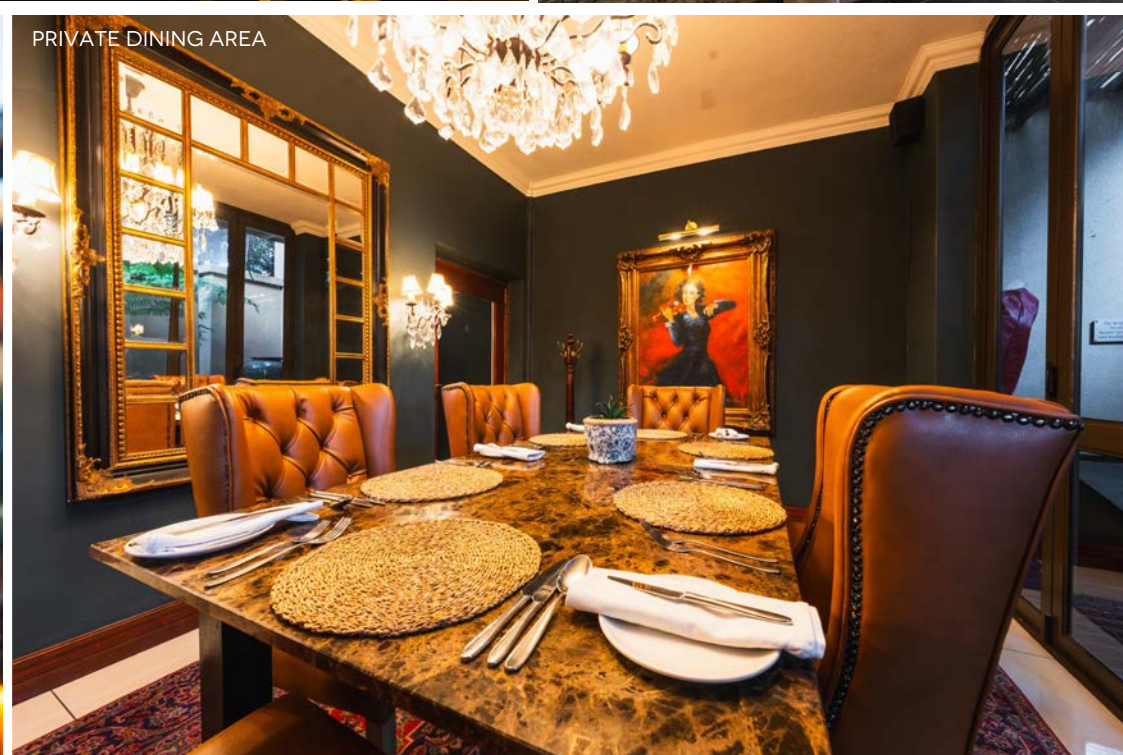
UNIQUELY DESIGNED ROOMS & SUITES



POOL



WARM HOSPITALITY



PRIVATE DINING AREA



WINE CELLAR

# THE RESIDENCE COLLECTION

THE  
RESIDENCE  
HOTEL

CLASSICS CLASSIFICATION	PREMIER
IMPACT OF EACH GUEST STAY	MEDIUM
CHILDREN - MINIMUM AGE	ALL
FAMILY ROOMS	✓
EXCLUSIVE CAMP / VILLAS	X
HONEYMOON OFFER	X
LAND SAFARI	X
WATER SAFARI	X
SPECIAL ACTIVITIES	SPA TREATMENTS, CITY TOURS, HISTORICAL & CULTURAL EXPERIENCES, SHOPPING, GOLF AND PRIVATE DINING.
GET INVOLVED - CONSERVATION	X
GET INVOLVED - COMMUNITIES	X
WELLNESS & MASSAGE	✓

#### CLASSIC CLASSIFICATIONS:

P – Premier: These camps/lodges feature luxurious amenities and are often priced at a higher tier.

C – Classic: These camps/lodges offer a more down-to-earth experience and are priced at a mid-level rate.

E – Expedition: These experiences are best suited for small groups or trips led by private guides.

#### IMPACT OF EACH GUEST STAY:

L – Low

M – Medium

H – High

VH – Very High

Based on the following 4 considerations we look at the positive impact that each guest is making by staying here:

- **Transferability:** What percentage of the daily rates is allocated to conservation and community initiatives?
- **Removability:** What impact would arise if the property were absent? Are there alternative lodges in the vicinity that continue to make positive contributions?
- **Responsibility:** To what extent does the property handle management privately, and how much is overseen as a concession under a collaborative arrangement?
- **Fragility:** How vulnerable is the surrounding environment and community?

[WWW.RESIDENCECOLLECTION.CO.ZA](http://WWW.RESIDENCECOLLECTION.CO.ZA)

[info@residencecollection.co.za](mailto:info@residencecollection.co.za)

[WWW.CLASSIC-PORTFOLIO.COM](http://WWW.CLASSIC-PORTFOLIO.COM)

The Classics website has more detailed information, images, live availability and rates,

together with

our comprehensive Crib Sheet.

BOOKINGS: [stitch@classic-portfolio.com](mailto:stitch@classic-portfolio.com)

SUPPORT: [info@classic-portfolio.com](mailto:info@classic-portfolio.com)

CLASSIC PORTFOLIO