

# THE RETREAT

giraffe manor

A haven of wellness in the heart of a Nairobi suburb, The Retreat is a wonderful space for relaxation against a backdrop of nature. Created exclusively for guests of Giraffe Manor and The Safari Collection, it provides the perfect beginning or ending to any African safari.

Through our unique collection of four spectacular properties, our new retreat, online shop [giraffemanorshop.com](http://giraffemanorshop.com) and dedicated Footprint foundation, we offer high end, sustainable tourism, making a difference to people and our planet.



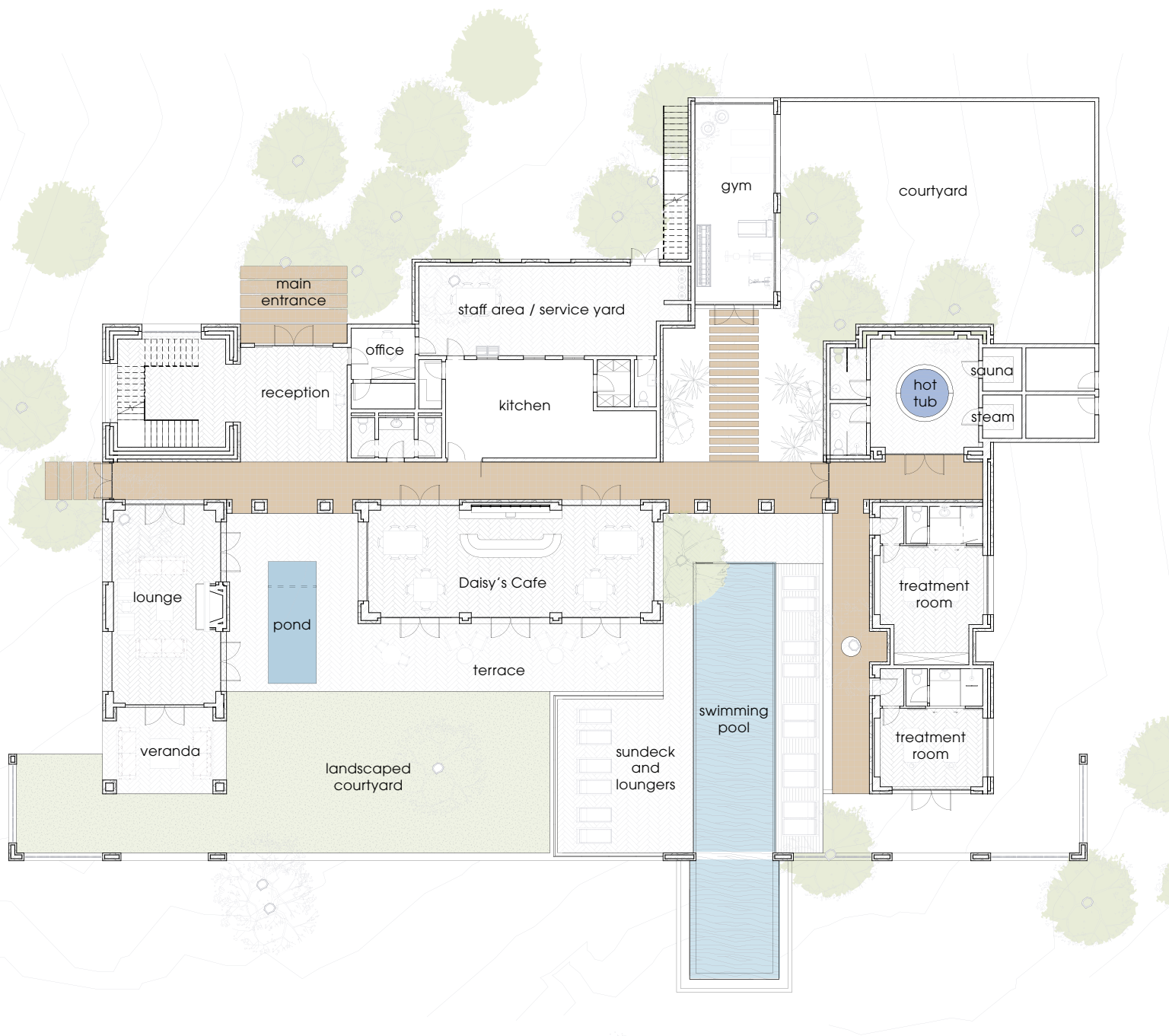
THE SAFARI COLLECTION



# W E L C O M E

TO THE RETREAT AT GIRAFFE MANOR

Located on the same forested sanctuary as Giraffe Manor, The Retreat provides an exquisite wellness experience for our Manor House guests as well as a day room facility for guests of The Safari Collection portfolio who require a stopover in Nairobi. Located just 80 metres to the left of the Main Manor, it shares the same tranquil outlook over the forested giraffe sanctuary.



Designed to pay homage to the original house next door, The Retreat is an elegant mix of open plan indoor and outdoor spaces. High ceilings and impressively large arched windows frame the Manor's iconic herd of giraffes which might be glimpsed loping across the lawns in the distance or at the end of the infinity pool.



As we say to our guests...

***Heri yako heri yangu.***

*Your happiness is my happiness.*

Swahili proverb

## FACILITIES & ACTIVITIES

Cocoon yourself in wellness with our sauna, steam room and hot tub. Dispel jet-lag with a gym workout. Nourish yourself with a lazy al fresco lunch from our nutritious selection of homemade snacks and meals. Recline on the breezy roof top garden. Glide through our infinity pool and glimpse a giraffe. Indulge in an afternoon nap in one of our sumptuous day rooms. It's easy to while away the hours here. For visitors departing on late night flights, this is the ideal place to be as both the international and domestic airports are within easy reach.

Facilities include:

- 21 metre infinity pool
- fully equipped gym
- sauna, steam room and hot tub
- 2 en-suite spa treatment rooms
- restaurant and bar
- 4 day bedrooms
- sundeck and rooftop garden
- indoor lounge with fireplace

This is a space where relaxation comes easily. Giant archways frame leafy green views against a backdrop of birdsong and a sense of having escaped the city.



***Chwewapo na jua, lala.***

*When you are overtaken by the sunset, sleep.*

Swahili proverb

## DAY ROOM ACCOMMODATION

Four first-floor bedrooms provide peaceful sleeping spaces for those wishing to rest pre and post-travel. Guests are NOT able to stay overnight at The Retreat or visit Giraffe Manor, however our en-suite bedrooms can be booked for the day and provide ultimate comfort alongside our wellness centre.

Sink into comfortable beds and enjoy calming leafy views out onto forested gardens. Lovingly named after our youngest giraffes at the Manor, each day room is

subtly different in size and design but all have balconies with twin or double bed options and an additional day bed. Huge walk-in rain showers flooded with natural light from above, ample room for reorganising luggage and space in which to relax come as standard. Waridi's Room and Nandi's Room have open plan bathrooms with a separate toilet, whilst Lily's Room and Alizeti's Room have doors separating the bathrooms.





## IN-ROOM AMENITIES

- drinking water
- selection of soft drinks
- tea and coffee facilities
- homemade snack
- handmade Kenyan toiletries
- Wi-Fi and desk space
- dressing gowns
- hairdryer
- safe

# DAISY'S

cafe

*Freshly prepared farm to fork cuisine*

Our expert team of chefs are on hand at Daisy's Cafe to serve up a delightful menu of freshly prepared snacks, meals and beverages at any time of the day. From nutritious smoothies to exciting salads and more hearty evening meal options, there's something for everyone, with a focus on fresh and vibrant 'farm to fork' style cuisine.

Dine al fresco in nature or under the vaulted ceilings of Daisy's interior. All food is excluded and can be added to a room tab or settled directly. Giraffe Manor guests are welcome to pop over for a mid-morning coffee in the courtyard garden and enjoy the facilities – any extras will be added to their room bill.





## FAST FACTS

- Facilities are free to overnight guests in residence at Giraffe Manor, excluding spa treatments, food and drinks.
- Giraffes do NOT have access to rooms or dining areas at The Retreat. However, direct contact with the giraffes is possible at the end of the pool, although as wild animals we cannot guarantee their presence at any given time.
- The Retreat, like the Garden Manor, is only open to guests of The Safari Collection portfolio and therefore can only be booked in combination with one or more of our bush properties (Sasaab, Solio Lodge and/or Sala's Camp) excluding Giraffe Manor. If guests are only staying at Giraffe Manor, they can use The Retreat facilities during their stay within the check-in and check-out hours. If they require a Retreat Pass, Early Bird Package or Day Room at any other point during their safari they are welcome to book one of our bush properties.
- 4 weeks from arrival, any last-minute space at The Retreat (Day Rooms, Retreat Pass or Early Bird) will be available to book as a standalone destination.
- The Retreat rooms cannot be booked for overnight stays; they are for day use only.
- The Retreat closes daily from 10:00 pm to 6:00 am.





## RATES 2021 – 2022

VALID: 01 AUGUST 2021 – 31 DECEMBER 2022

All day rooms are priced per room, regardless of whether you fill the room capacity or whether the guests are children. Children aged 2 years and under do not count in room capacity and stay free of charge.

LARGE DAY ROOM - Lily's Room		RATE
Minimum Room Rate (based on up to 4 guests sharing)	Day room	US\$ 1,600
Extra Guest (capacity for 2 extra guests)		US\$ 350

MEDIUM DAY ROOM - Waridi's Room & Nandi's Room		RATE
Minimum Room Rate (based on up to 3 guests sharing)	Day room	US\$ 1,200
Extra Guest (capacity for 1 extra guest)		US\$ 350

SMALL DAY ROOM - Alizeti's Room		RATE
Minimum Room Rate (based on up to 2 guests sharing)	Day room	US\$ 800
Extra Guest (capacity for 1 extra guest)		US\$ 350

ADDITIONAL ACCESS TO THE RETREAT		RATE
Retreat Pass (access to The Retreat for the day)		US\$ 250
Early Bird Package (breakfast and half day access)		US\$ 250





## RATES 2021 – 2022

### INCLUDE

Rates include complimentary water, a selection of soft drinks, a homemade snack and use of The Retreat's facilities (pool, gym, steam room, sauna, hot tub), subject to availability.

### EXCLUDE

Rates exclude spa treatments, all food and drink (except the complimentary in-room soft drinks and snack), transfers, excursions and access to Giraffe Manor.

### EXTRA GUESTS IN DAY ROOMS

Extra day room guests are not provided with an extra bed. Each day room has a twin or double bed option and an additional day bed. Lily's Room has two additional day beds.

### CHILDREN

Children aged 2 years and under stay for free and do not count in room capacity. Full rate is applicable to children 3 years and above for Day Rooms, The Retreat Pass and Early Bird Package. Please note that our swimming pool does not have a lifeguard therefore your children must be supervised at all times.

### RETREAT PASS

The Retreat Pass is valid from 10:00 am to 10:00 pm. It includes complimentary water, luggage storage and use of The Retreat's facilities (pool, gym, steam room, sauna, hot tub), subject to availability.

All food and drinks, day room use, spa treatments, transfers, excursions and access to Giraffe Manor is excluded.

There is a maximum capacity of 10 day passes per day.

### EARLY BIRD PACKAGE

The Retreat Early Bird package is valid from 6:00 am to 12:00 noon. It includes a continental breakfast, complimentary water, luggage storage and the use of The Retreat's facilities (pool, gym, steam room, sauna, hot tub), subject to availability. Please note that the giraffes do NOT have access to breakfast at The Retreat.

All other food and drinks, day room use, spa treatments, transfers, excursions and access to Giraffe Manor are excluded.

There is a maximum capacity of 8 Early Bird passes per day.



## SPECIAL OFFERS 2021 – 2022

Book 7 nights or more in any of The Safari Collection properties and get:

- Complimentary hamper from The Retreat.
- 30% off either your Retreat Day Room, Early Bird Package or Retreat Pass. Rates are as follows::

LARGE DAY ROOM - Lily's Room		RATES WITH 30% DISCOUNT
Minimum Room Rate (based on up to 4 guests sharing)	Day room	US\$ 1120
Extra Guest (capacity for 2 extra guests)		US\$ 245

MEDIUM DAY ROOM - Waridi's Room & Nandi's Room		RATES WITH 30% DISCOUNT
Minimum Room Rate (based on up to 3 guests sharing)	Day room	US\$ 840
Extra Guest (capacity for 1 extra guest)		US\$ 245

SMALL DAY ROOM - Alizeti's Room		RATES WITH 30% DISCOUNT
Minimum Room Rate (based on up to 2 guests sharing)	Day room	US\$ 560
Extra Guest (capacity for 1 extra guest)		US\$ 245

ADDITIONAL ACCESS TO THE RETREAT		RATES WITH 30% DISCOUNT
Retreat Pass (access to The Retreat for the day)		US\$ 175
Early Bird Package (breakfast and half day access)		US\$ 175

These offers are subject to availability. They are non-transferable and apply to new bookings only. Terms and conditions do apply.



## RATES 2021 – 2022

### BOOKING POLICY

Booking terms are as per the Garden Manor policy as follows:

The Retreat is only open to guests of The Safari Collection portfolio and therefore can only be booked in combination with one or more of our bush properties (Sasaab, Solio Lodge and/or Sala's Camp) excluding Giraffe Manor. If guests are only staying at Giraffe Manor, they can use The Retreat facilities during their stay within the check-in and check-out hours. If guests require a Retreat Pass, Early Bird Package or Day Room at any other point during their safari they are welcome to book one of our bush properties.

At 4 weeks from arrival, any last-minute space at The Retreat (Day Rooms, Retreat Pass or Early Bird) will be available to book as a standalone destination.

Please note in the event of the bush property being cancelled, the booking at The Retreat is forfeited and becomes subject to availability at 4 weeks out.

### TERMS AND CONDITIONS

Booking Terms and Conditions are as per all The Safari Collection properties, please refer to our rates sheet for more information.





**Asiyesafiri, taa haing'ari.**  
One who does not travel  
has no shining lamp.

- Swahili proverb -

[thesafaricollection.com](http://thesafaricollection.com)

**#discoverTheSafariCollection**



@thesafaricollection



/TheSafariCollectionKenya



@giraffe\_manor



THE SAFARI COLLECTION

Through our unique collection of four spectacular properties, our new retreat, online shop [giraffemanorshop.com](http://giraffemanorshop.com) and dedicated Footprint foundation, we offer high end sustainable tourism, making a difference to people and planet. [thesafaricollection.com](http://thesafaricollection.com)

**GIRAFFEMANOR**  
nairobi

**SASAAB**  
samburu

**SALA'S CAMP**  
masai mara

**SOLIO LODGE**  
laikipia

**THE RETREAT**  
giraffe manor

**FOOTPRINT**  
foundation

GIRAFFE MANOR SHOP